

# Accord Manager

## Plan – Recipe

### User Guide

---

**Document:** Accord Manager V4.12.1.0 User Guide - Plan - Recipe

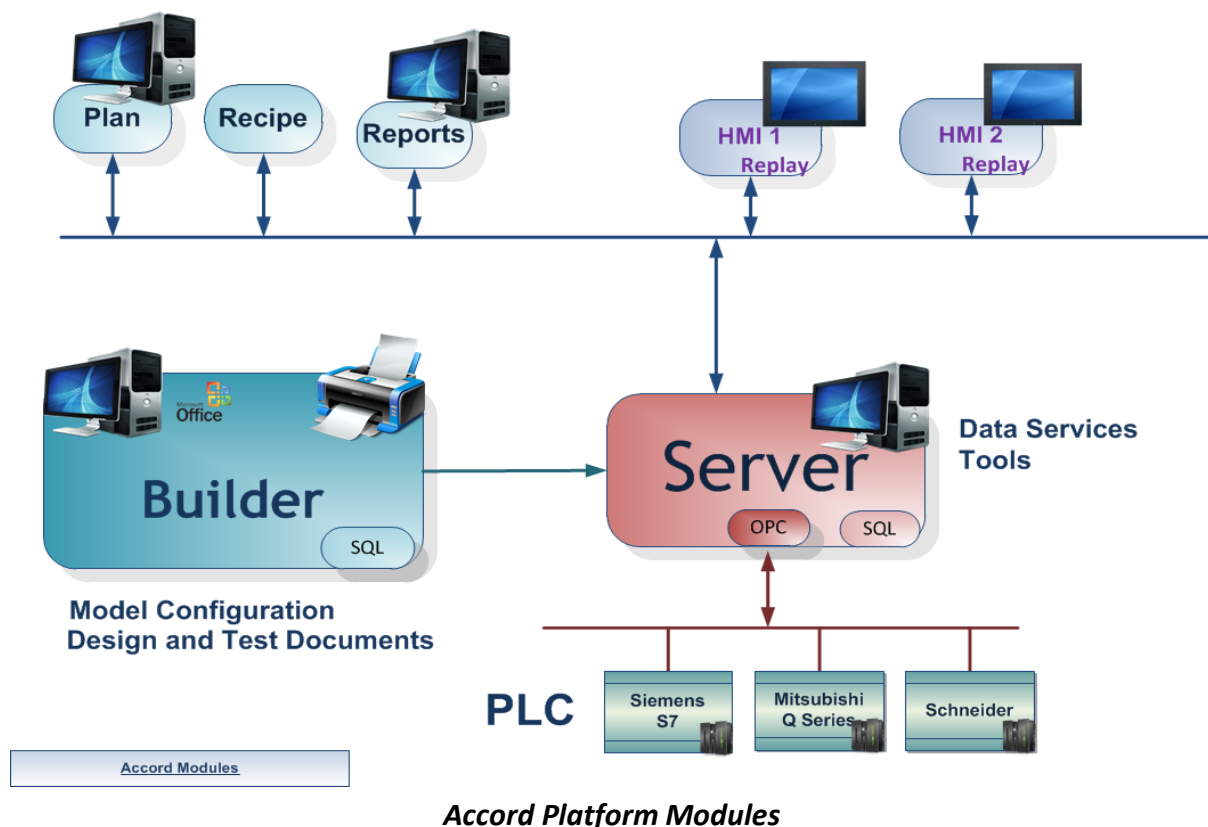
## Table of Contents

1	Introduction.....	3
2	Plan configuration .....	4
2.1	Starting Plan .....	5
2.1.1	Plan Manager .....	5
2.1.2	Creating a Plan .....	6
2.2	Plan Configuration.....	7
2.3	Plan Configuration.....	9
2.3.1	General Configuration.....	9
2.3.2	Row Configuration .....	9
2.3.3	Available Item Types .....	10
2.3.4	Properties and Values .....	12
2.4	HMI Prompt Configuration.....	15
2.5	Plan Advanced Mode .....	16
2.6	Saving Plan .....	21
2.7	Exporting Plan .....	22
3	Plan Manager Screens .....	23
3.1	Summary .....	23
3.2	Functionality.....	24
3.3	Plan Controls .....	26
3.4	Plan History .....	28
<b>4</b>	<b>Recipe Configuration .....</b>	<b>30</b>
4.1	Adding and Deleting Recipes.....	30
4.2	Configuring the Recipe .....	32
4.2.1	Setpoints .....	32
4.2.2	Step Times.....	33
4.2.3	Decisions .....	34
4.3	Exporting the Recipe Report .....	34

## 1 Introduction

Accord Plan allows for the configuration of a sequence of Programs with selectable Recipes. Each Sequence can contain different programs and recipes. The Plan Sequence may be saved as a Template or may be run as a single Plan. Each Plan sequence may be started within another Plan sequence, allowing users to build simple plans, and combine them to perform more complex tasks.

Each Sequence may be attached to a configured Report, and this will automatically generate a Plan Report when the sequence finishes.



The Accord Modules may be hosted on single PC or distributed across many PC's.

See also Accord Installation V4.12 User Guide

## 2 Plan configuration

Accord Plan provides functionality for running programs in sequences, with Recipes selections for options, step options and setpoints.

Plans can be configured in two different modes: basic and advanced. Plan mode can be configured when editing or adding a Plan.

### 1. Basic Mode:

- Plan steps are executed in sequence, going to the next row in the configuration when conditions are met.
- These Plans cannot be configured to start other Plans.

### 2. Advanced Mode:

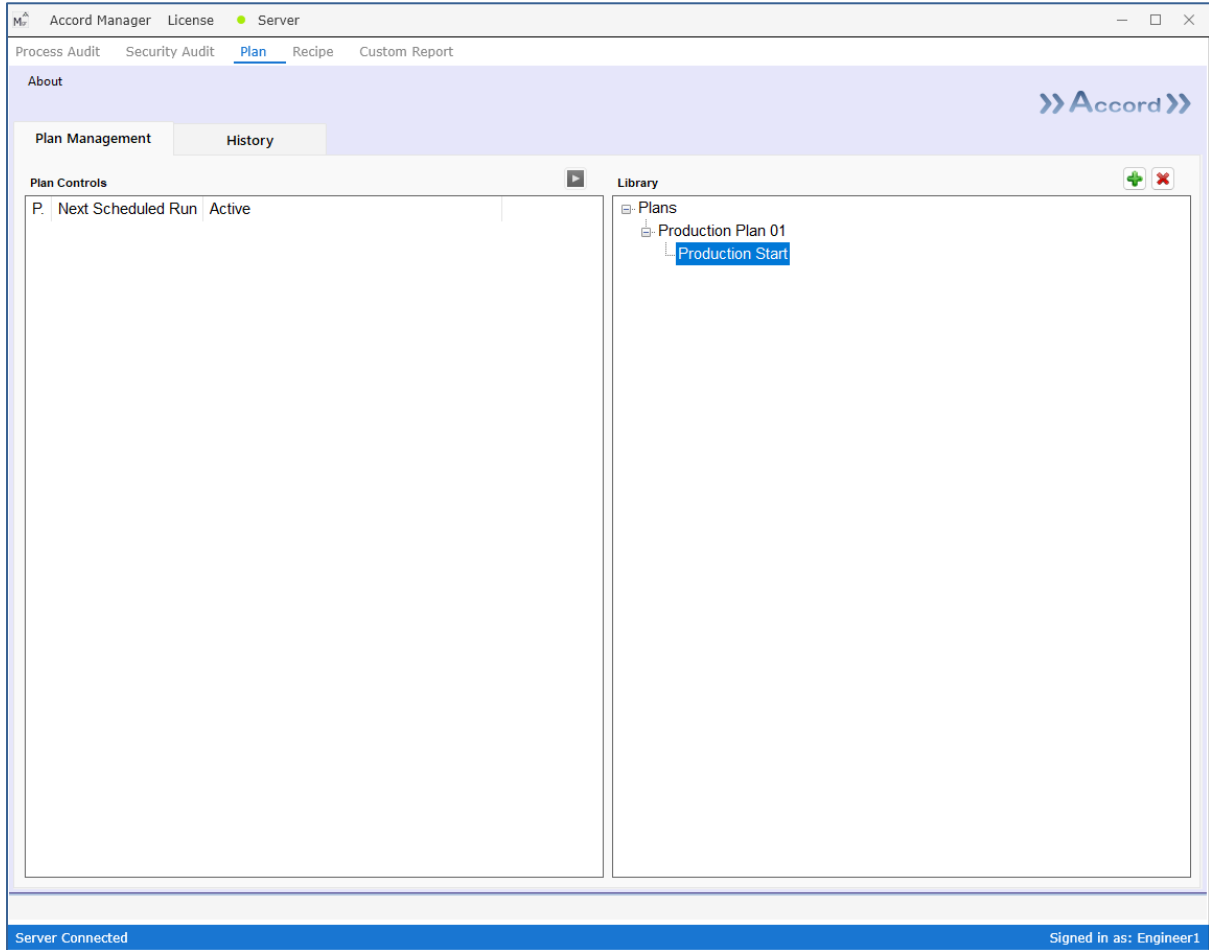
- These are configured with “Step To” configuration; they can be configured to move to a defined Plan row. A list of “Step To” can be configured per plan row. Each “Step To” can be configured with destination which the Plan moves to once an enabling trigger condition is met.
- These Plans can be configured to start other Plans. This allows larger sequences to be composed of smaller sequences and provides good flexibility, with a limit of 3 levels.

## 2.1 Starting Plan

### 2.1.1 Plan Manager

When starting Accord Plan, the initial screen is presented.

The service should be connected in lower left of the panel and the user should be logged in lower right of the panel. Clicking on either provides access for change.



**Plan - Initial Screen**

The Plan Management screen has two sections.

Plans can be created and configured in the library on the right. Plans are enabled when dragged to the left hand side.

Library in Righthand side of Plan Manager.

Plans can be created, modified or deleted here. Right-Clicking allows for addition of a new plan or for the import of an existing Plan.

Plan Controls is the Lefthand side of Plan Manager.

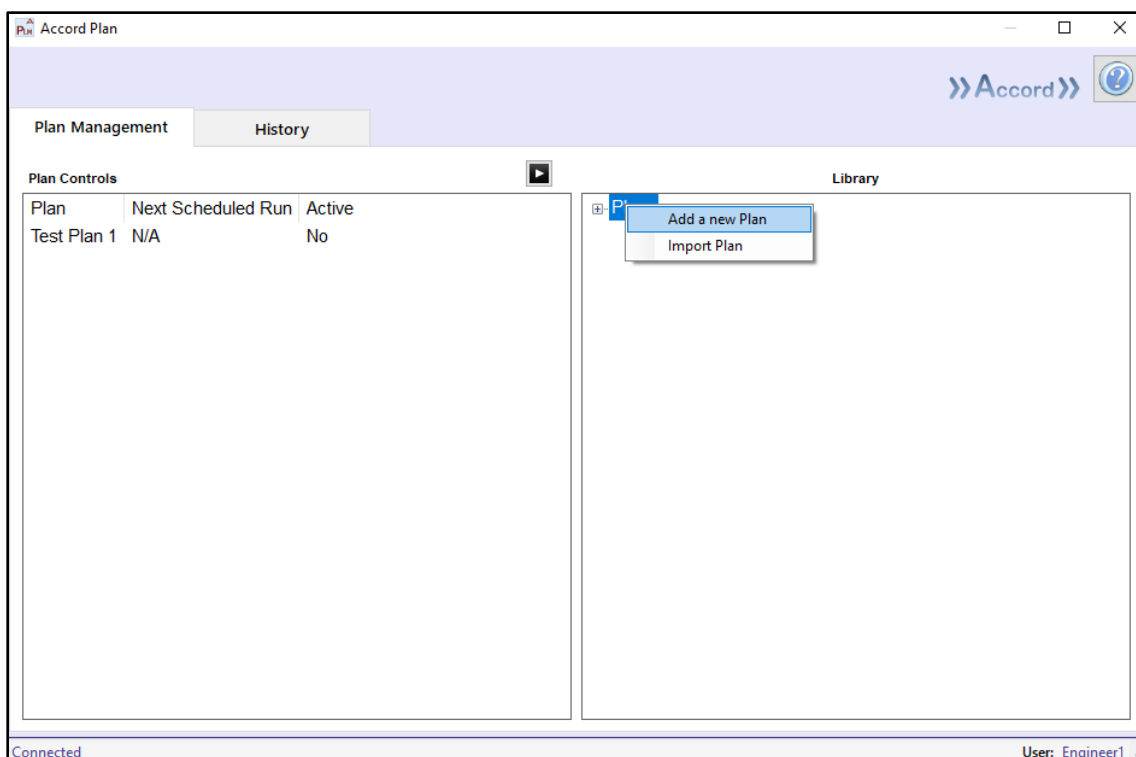
Plans can be started, paused or resumed here. A Plan can be started by selecting the Plan and pressing the start button above the Plan Controls. A Plan can also be started by doubling clicking a Plan and selecting start.

The Plan status is shown in the “Active” column; a running Plan is displayed as “Yes”.

Plan details are accessed by double clicking on the Plan Name. Plan History, Full Plan Controls and Plan Status details are shown.

### 2.1.2 Creating a Plan

A new Plan is created by right-click on the ‘Plans’ drop-down tree on the right plane and selecting “Add a New Plan” from the drop-down menu.

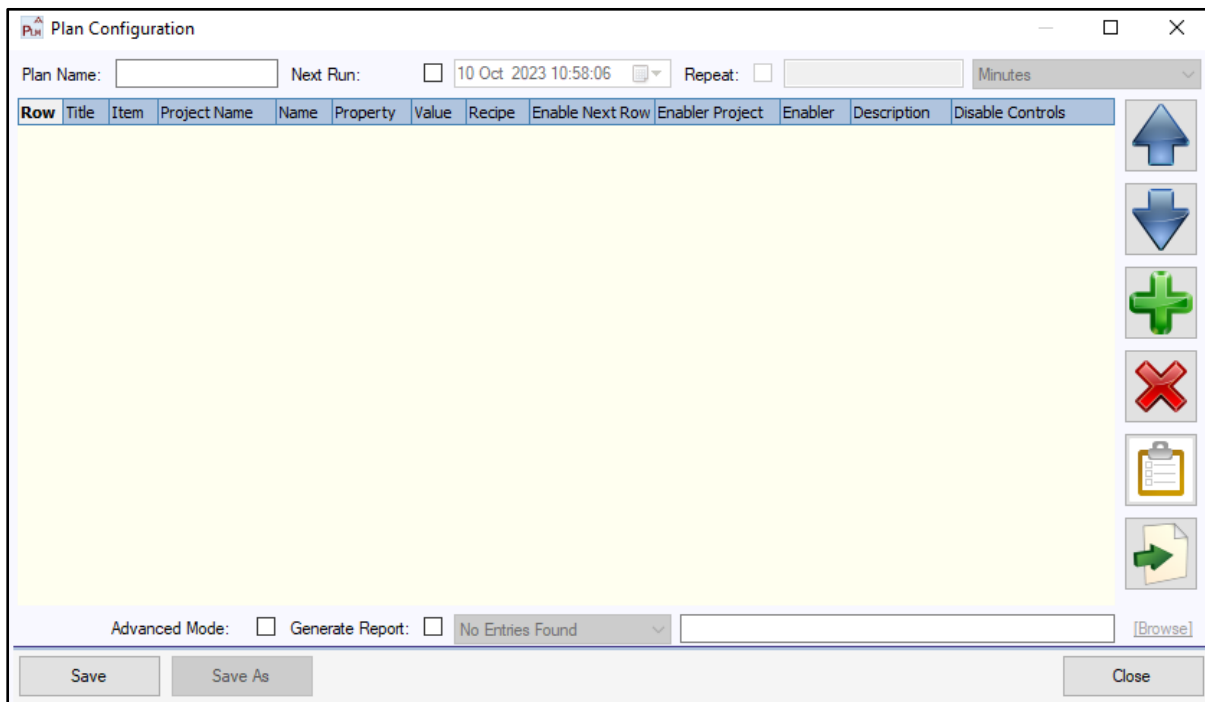


**Plan – Adding New Plan**

The Plan configuration form is then presented.

## 2.2 Plan Configuration

The Plan configuration is presented as a series of Rows where each Row is an action, whose configuration is described in the panel Columns.



**Plan - New Plan Start Screen**

**Plan Name:** This is assigned when Plan is saved.

**Next Run:** This is used to run a Plan at a predefined time, which is entered when the check box is enabled.

**Repeat:** A Plan which is set to run at a predefined time can also be setup to run on a schedule. If the Plan is Inactive after running, the Plan will begin again automatically once the Plan has been Inactive for the duration of the Repeat time. This can be setup by selecting the repeat check box and entering Repeat Time intervals, and selecting the unit of interval.



**Up Arrow:** Moves the selected row up by one position.



**Down Arrow:** Moves the selected row down by one position.



**Add Row:** Adds a new blank row to the Plan.



**Delete Row:** Removes the selected row from the Plan.



**Edit Row:** Opens a popup to edit the selected row of the plan.



**Export:** Exports the Plan to a defined destination folder on the PC.

**Advanced:** This toggles between Advanced Mode and Basic Mode.

**Generate Report:** This allows a Process Audits Plan Type report to be automatically generated when the Plan completes. A destination folder must be selected.

**Save:** Saves and closes the opened Plan as a new Version of the Plan.

**Save As:** This is available when saving an existing Plan. Prompts for a new Plan name and saves a copy under that name.

**Close:** Closes the opened Plan Configuration.

## 2.3 Plan Configuration

### 2.3.1 General Configuration

The following is the initial setup:

A name for the Plan is entered.

A next run time and date are provided if scheduling is required.

A repeat interval number and time span are provided if automatic repetition is required.

The associated Plan Report and the location for storing Plan Reports are selected if reporting is required.

Advanced Mode is selected if other Plans are to be started from the current Plan or if the required step order is not sequential.

### 2.3.2 Row Configuration

A new row is added by selecting the **Add Row** button. The Plan Row Details screen is then presented. The popup is divided into three sections.

Rows are added until the Plan performs the required sequence of tasks.

**Action:** A Plan row name is entered. This name appears in the Plan and in Plan Manager once saved. The Item field is used to select the type of action the Plan row performs.

Controls for programs currently controlled by the Plan can be disabled. If **Disable Controls** is selected, program controls on the HMI are disabled.

**Target:** The object to which the action is applied is selected.

**Enabler:** This section is available in Basic Mode only. When the enabler condition is met, the Plan proceeds to the next row. This section is not displayed in Advanced Mode.

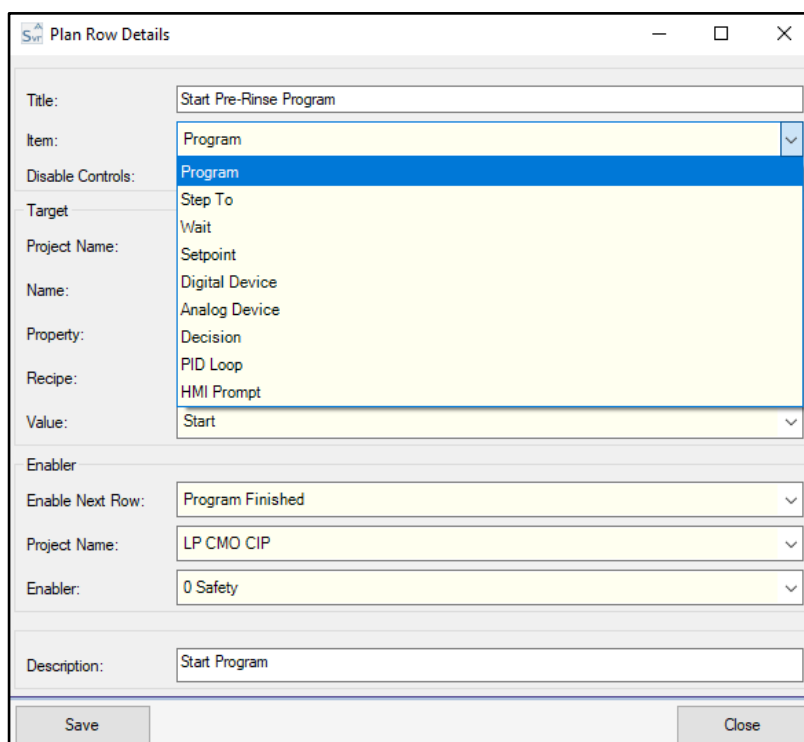
A Plan Step Title is entered in the designated field.

A required type is selected from the **Item** dropdown menu. The selection determines the available Target and Enabler options.

### 2.3.3 Available Item Types

The following Target item types are selectable:

- Program - a Program in the Project
- Wait - Pause for a period of Seconds.
- Setpoint - for changing.
- Digital Device - for Manual Activation
- Analog Device - for Manual Value
- Decision - for state change
- PID Loop - for Manual Operation
- HMI Prompt - Generate popup window for operator input.

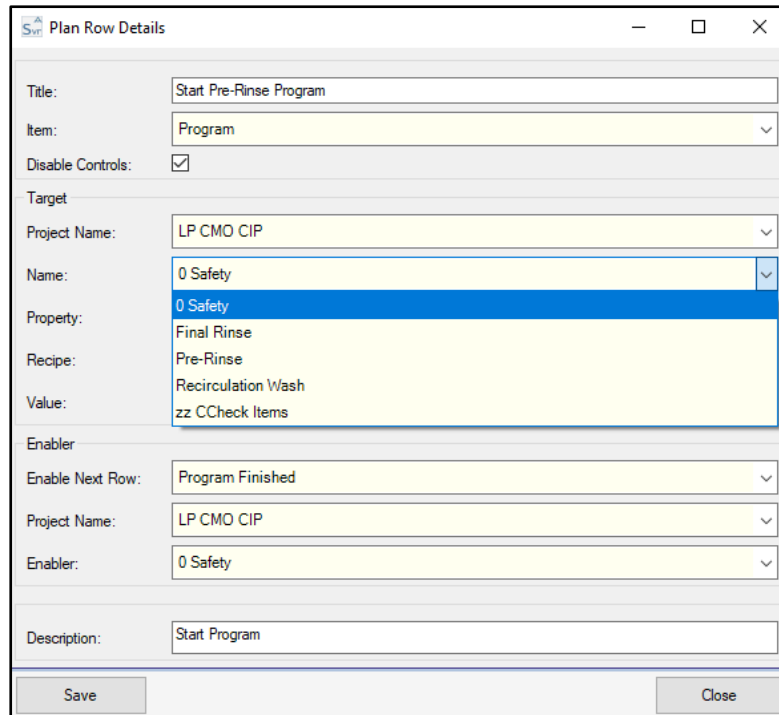


***New Plan Item Selection***

The **Target** item is configured using the dropdown menus.

**Project Name**

A project name is selected from the dropdown list. This filters the available target items so that only items within the selected project are shown.



***New Plan Project Name Selection***

**Name**

A device or object is selected. The list is populated based on the selected Item type and may include Programs, Steps, Setpoints, Digital Devices, Analog Devices, Decisions, or PID Loops.

**Property**

This field must be populated for Analog Devices, Digital Devices, and PID Loops. The Property defines whether a device is written to manual mode or assigned an activation value.

### 2.3.4 Properties and Values

Available Properties and Values depend on the selected Item type.

<u>Item:</u>	<u>Property:</u>	<u>Values:</u>
Program	Command	Start, End, Hold, Restart, Step On, Step Change, Disable Step On, Enable Step On,
Wait		
Setpoint	Setpoint	Required Value for Setpoint
Digital Device	Manual Mode Manual Command	True or False
Analog Device	Manual Mode Manual Value	True or False Desired Manual Value for Device
Decision	Result	True or False
PID Loop	Manual Mode Manual Value	True or False Desired Manual Value for Loop

#### Value

A value is selected from the dropdown list. This field must be populated for Programs, Setpoints, Digital Devices, Analog Devices, Decisions, and PID Loops. The selected value is written to the device.

#### Recipe Selection

If the Plan row is required to start a program, the required Recipe is selected. The selected Recipe is loaded to the PLC before the program is started. The Recipe list is based on the Accord Recipe. Any Recipes created for the selected program are displayed. If no Recipe is required, this field may remain set to "Default".

#### Enabling the Next Row (Basic Mode)

The **Enable Next Row** and **Enabler Value** fields are populated to ensure that the next action in the Plan can be carried out.

#### Enable Next Row

The type of item used to enable progression to the next row is selected.

#### Project Name

The project containing the required Enabler Value is selected.

#### Enabler Values

These values are filtered by the selected Enable Next Row type and provide a list of selectable items from the model. If Delay is selected, a delay period is entered as the Enabler Value. The delay period is defined in seconds. During this period, the Plan pauses before proceeding to the next row.

**Enabler Types**

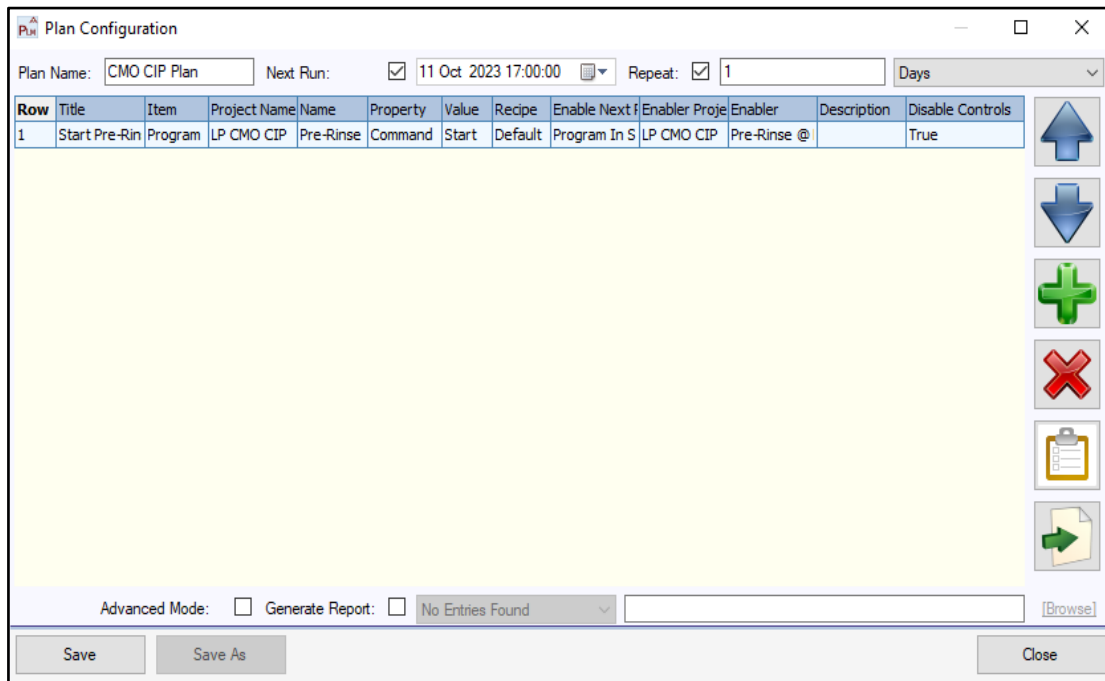
The next row is enabled when one of the following conditions is met:

<u>Enable Next Row:</u>	<u>Enabler Values:</u>	<u>Next Row is enabled when:</u>
Program Finished	Program Name	Selected Program is completed or ended
Program in Step	Program@Step	Selected Program is active in the selected Step
No Delay		Immediately
Delay	Delay Value (Integer)	After the Delay value of Seconds
Decision True	Decision Name	Selected Decision in Model is True
Comparison True	Condition Name	Selected Comparison is True
Decision False	Decision Name	Selected Decision is False
Comparison False	Condition Name	Selected Condition is False
Digital Input Active	Digital Input Name	Selected Input is True
Digital Input Inactive	Digital Input Name	Selected Input is False/Inactive
Digital Device Active	Digital Input Name	Selected Device is True/Active
Digital Device Inactive	Digital Input Name	Selected Device is False/Inactive

***Sample Configured Row***

### Saving the Row

Once complete, check if all Plan Row settings are filled correctly and press the Save button. The saved Step is now displayed in the Plan Configuration form. Continue adding steps until the Plan is completed as required.



**Plan Row Configuration**

### 2.4 HMI Prompt Configuration

An HMI prompt can be included as part of a Plan by selecting **HMI Prompt** as the row Item. When this Item is selected, a **Configure Prompt** button becomes available. When the button is selected, a configuration popup is presented.

When the configured row becomes active during Plan execution, a popup window is displayed. The **Confirm** option must be selected in the popup before the Plan proceeds to the next row.

**Configure Prompt**

To configure the prompt:

A title for the generated prompt window is entered. This title is displayed at the top of the prompt. A message to be displayed in the prompt window is then entered. If an additional window is required, it must first be configured in HMI Design.

The HMI containing the popup window must be configured and deployed. Reference is made to the HMI Design User Guide for deployment to the HMI Server. The target HMI project is selected from the first dropdown list. The required HMI popup is selected from the second dropdown list.

If a signature is required for the prompt, the **Is Signature Required** checkbox is selected.

Multiple items may be configured for each HMI Prompt. For each required item:

The corresponding checkbox is selected.

The item type is selected.

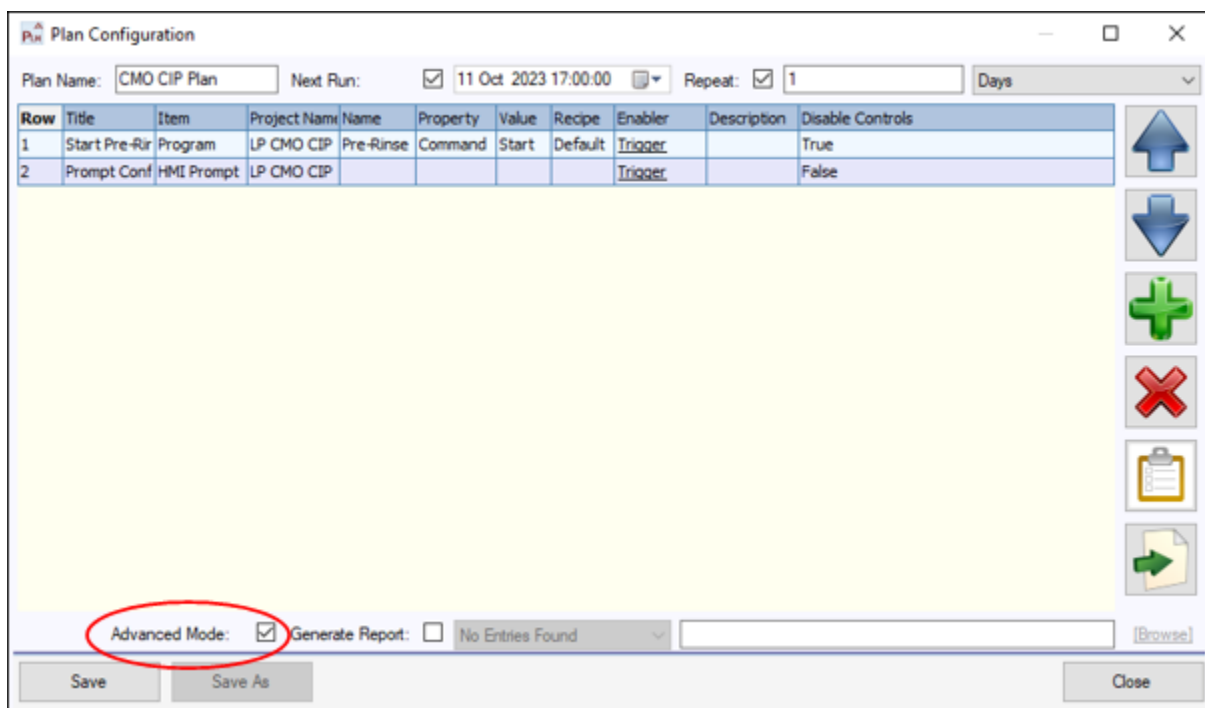
The text to be displayed in the prompt window is entered.

## 2.5 Plan Advanced Mode

Advanced mode allows for two core functions:

1. Multiple enablers with destination steps.
2. The ability to start a Plan inside a Plan.

It is possible to revert to Basic Mode if no current Plans are active. Triggers are not carried over when changing between modes, so triggers created when in Basic Mode must be re-created again in Advanced Mode.



**Plan - Advanced Mode Selection**

To configure steps in advanced mode:

1. Advanced Mode is enabled in the Plan Configuration Advanced Mode selection.
2. An additional row is added, or an existing row is edited.
3. The Plan Action and Target are configured as in a standard Plan.

An additional **Item** type, **Start Plan**, becomes available and the selected Plan is then started.

Fewer entries are configured in the row popup in Advanced Mode; the Enabler setup is removed from this popup - Enabler Types and Enabler Values are configured separately. The Plan Row configuration is saved once setup is complete.

**Plan Row Configuration in Advanced Mode**

**Configuring Plan Enablers in Advanced Mode**

Plan Enablers are accessed by selecting **Trigger** in the **Enabler** column for the required row.

Row	Title	Item	Project Name	Name	Property	Value	Recipe	Enabler	Description	Disable Controls
1	Start Pre-Rin	Program	LP CMO CIP	Pre-Rinse	Command	Start	Default	Trigger		True
2	Prompt Conf	HMI Prompt	LP CMO CIP					Trigger		False
3	Set Setpoint	Setpoint	LP CMO CIP	Setpoint A	Setpoint	55		Trigger		False

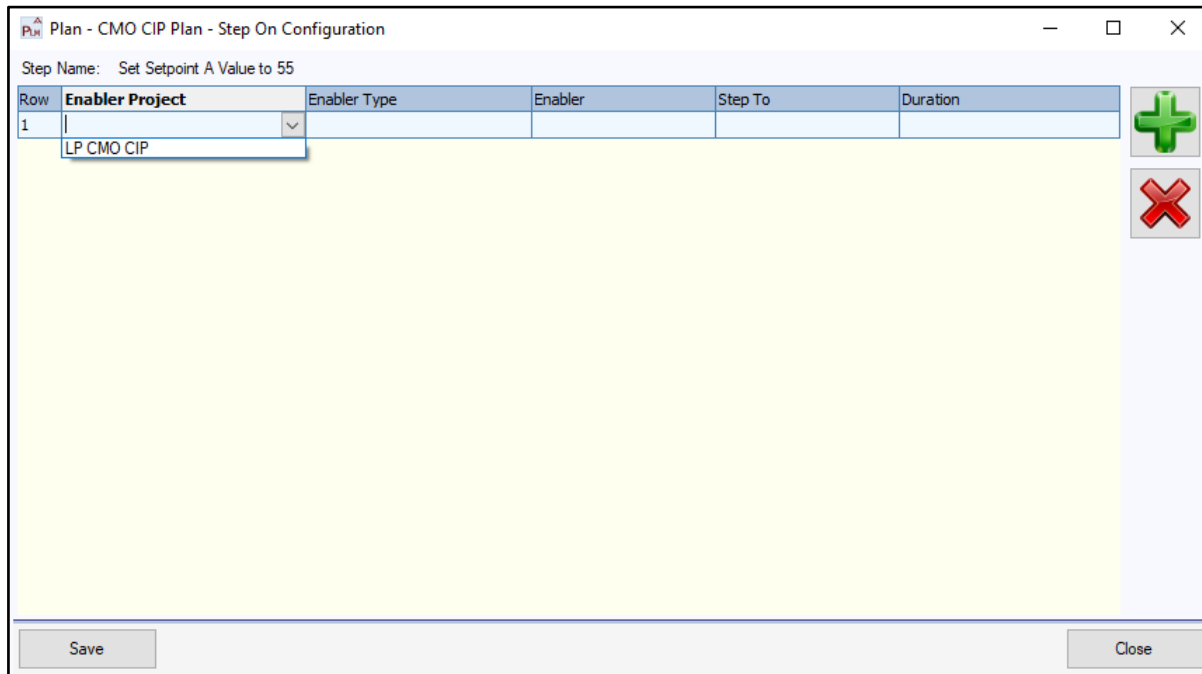
**Access Row Step to Configuration Form**

When the **Step On Configuration** popup is presented, the plus symbol is selected to add an additional configuration row and each column is populated in the same manner as a Basic Plan configuration.

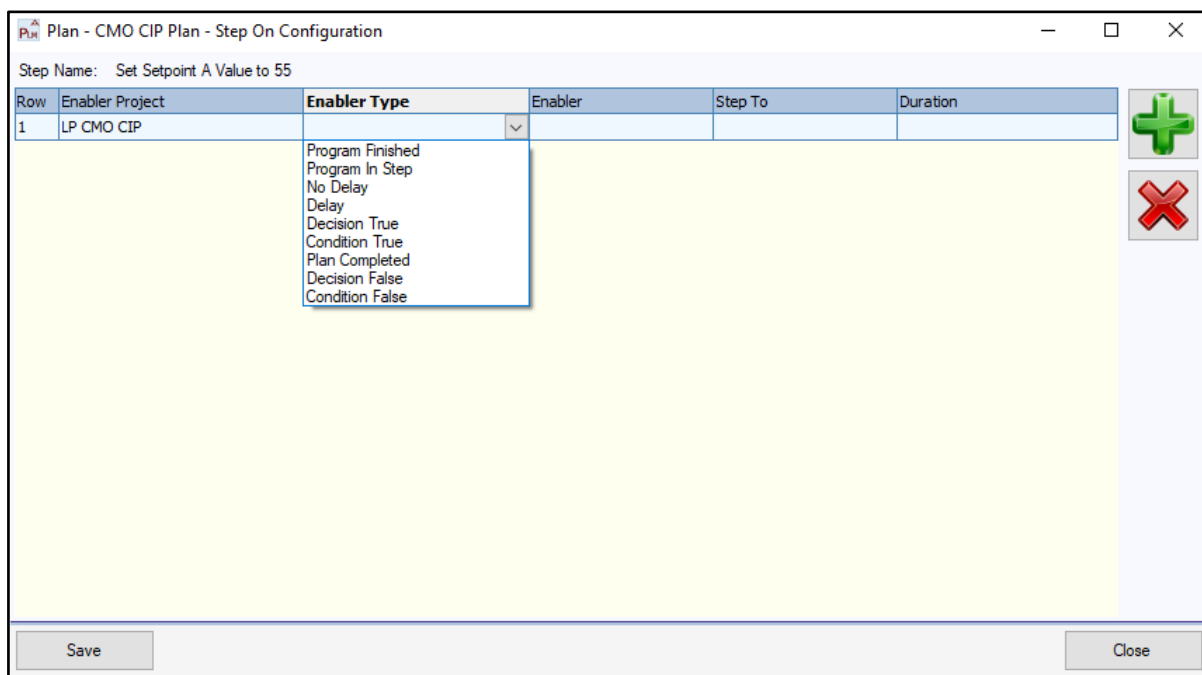
**Step To:** Multiple step transitions can be configured with multiple destinations. A destination step is entered in the **Step To** column. The Plan transitions to this step once the enabler condition is met.

If no Step To destination is selected and the enabler condition evaluates as TRUE, the Plan ends.

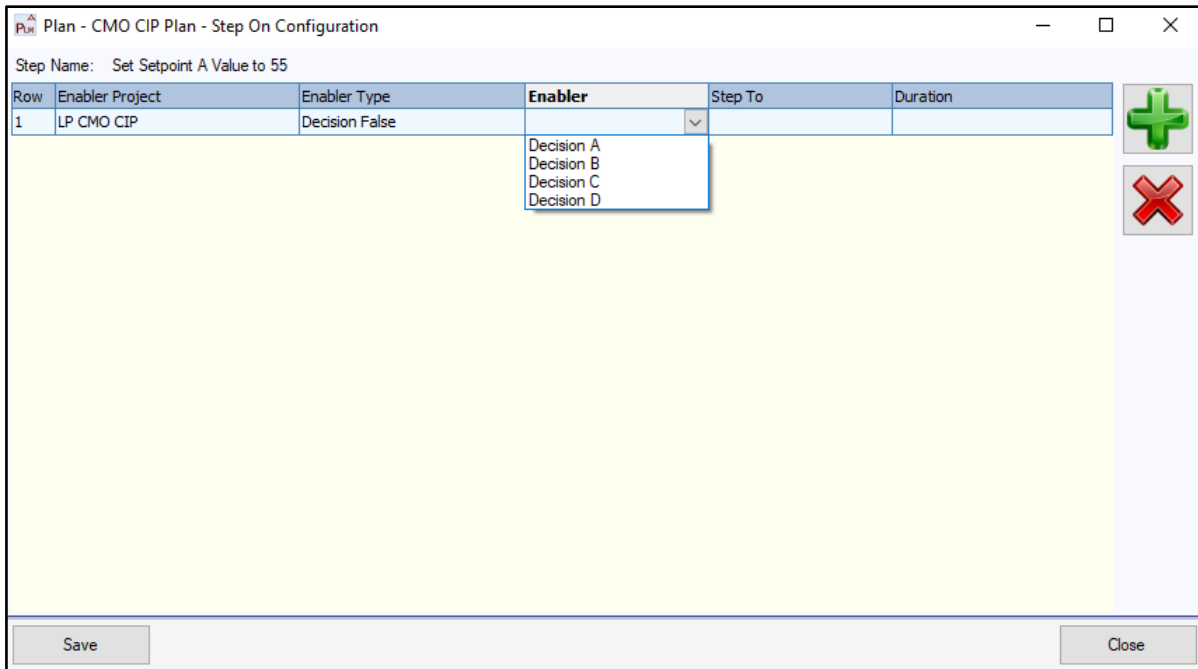
**Duration:** If **Delay** is selected as the enabler type, the duration is entered in seconds.



**Plan - Select Enabler Project Name**

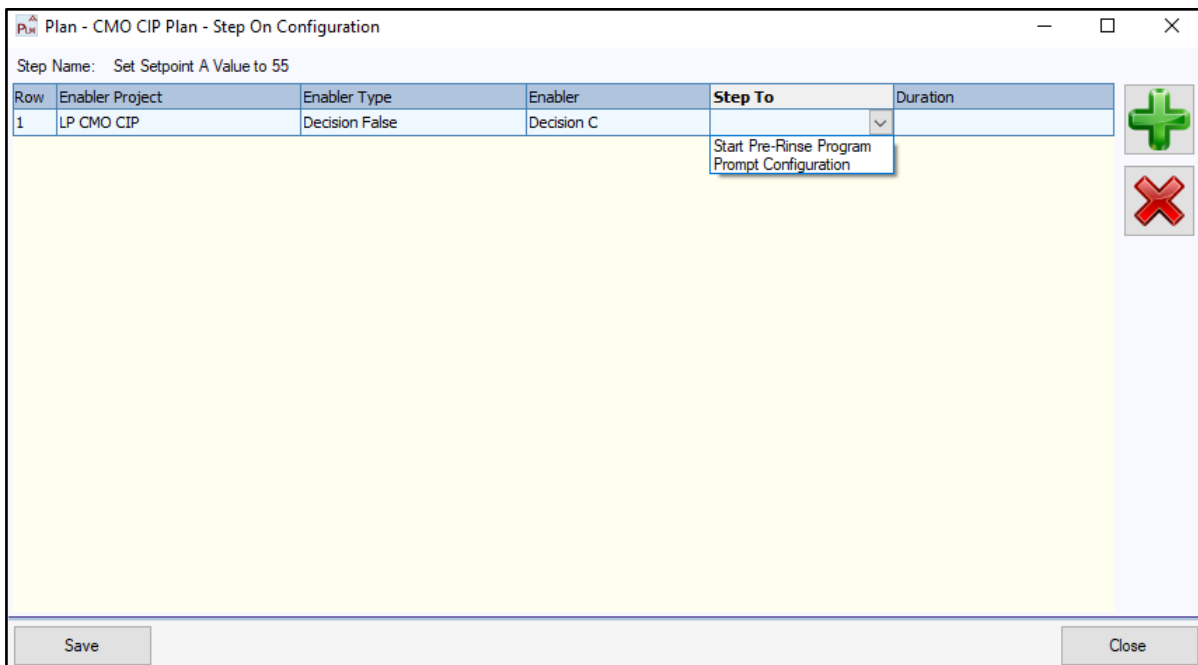


**Plan - Select Enabler Type**

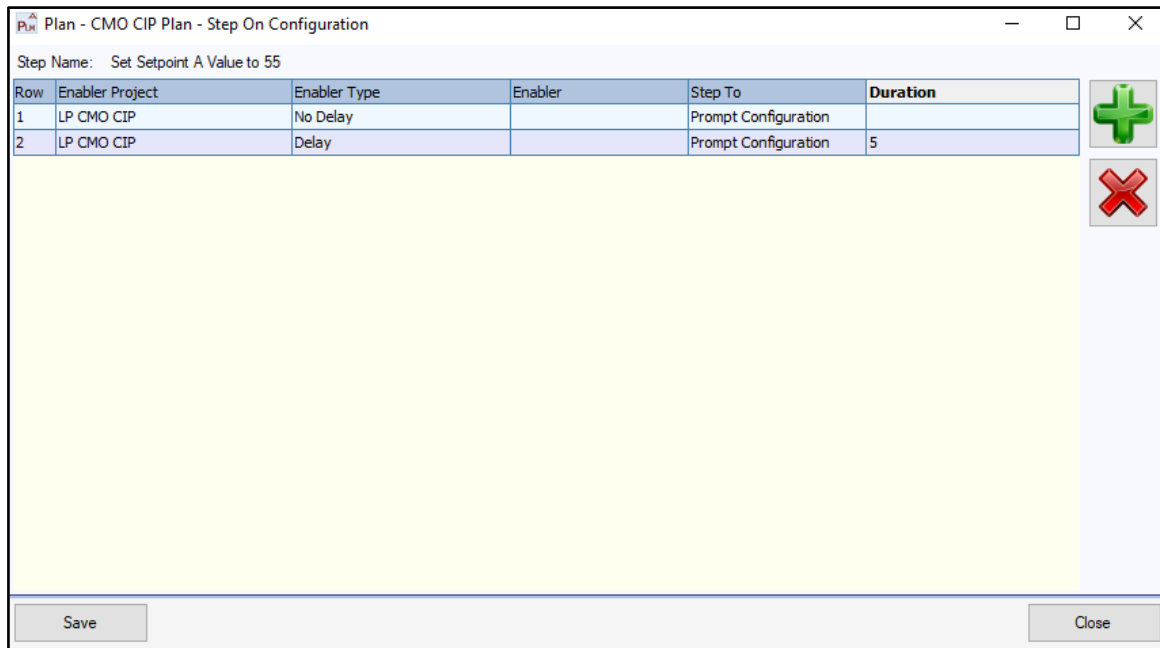


**Plan - Select Enabler Name**

Selecting the step to be moved to when the enabler condition is achieved.



**Plan - Select Step to Value**



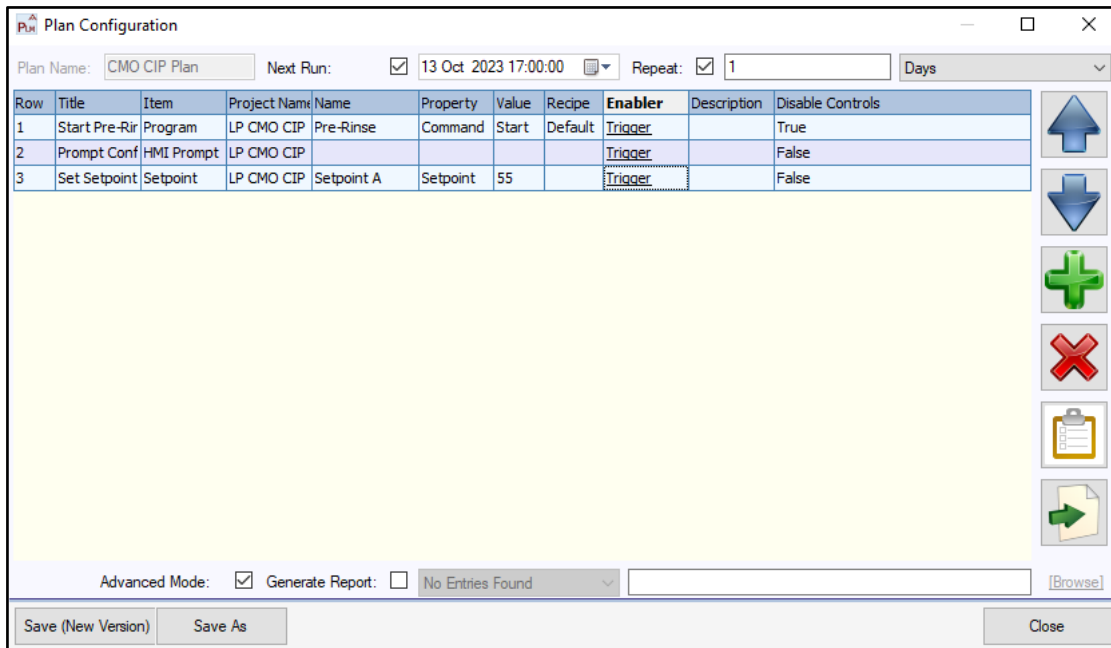
***Step To Configuration with Delay and No Delay***

Plan step enabler trigger in advanced mode with two completed enablers, showing ‘with Delay’ and ‘No Delay’ enabler type configurations.

Once Enablers for the row have been configured as desired, pressing the save button will exit the popup and return back to the Plan Configuration.

## 2.6 Saving Plan

The **Save** or **Save As** option is used to store a configured Plan.

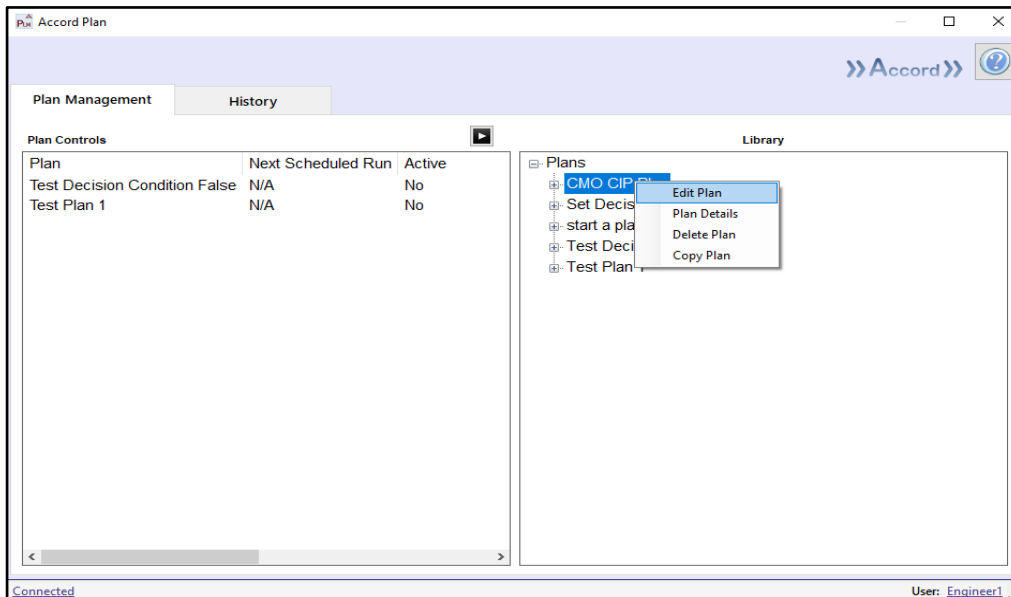


***Plan Configuration to be Saved.***

The Plan appears on the right-hand side of the Plan Manager in the Library.

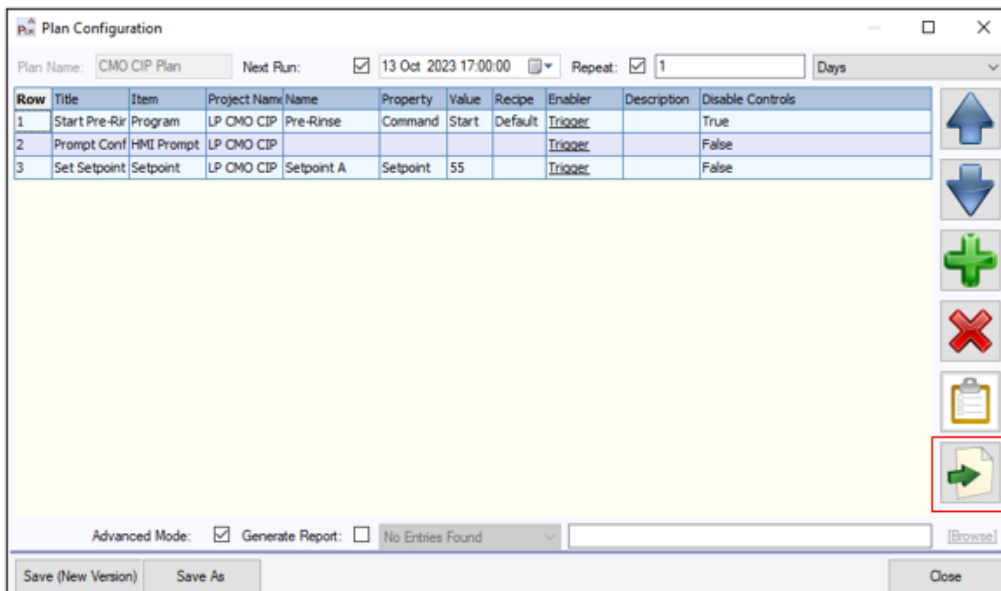
## 2.7 Exporting Plan

The export is from within the Plan configuration which is accessed using Edit Plan.



**Edit Plan**

Export is carried out using the Export button in Plan Configuration form.



**Export Plan**

The destination folder is confirmed before the configuration is exported.

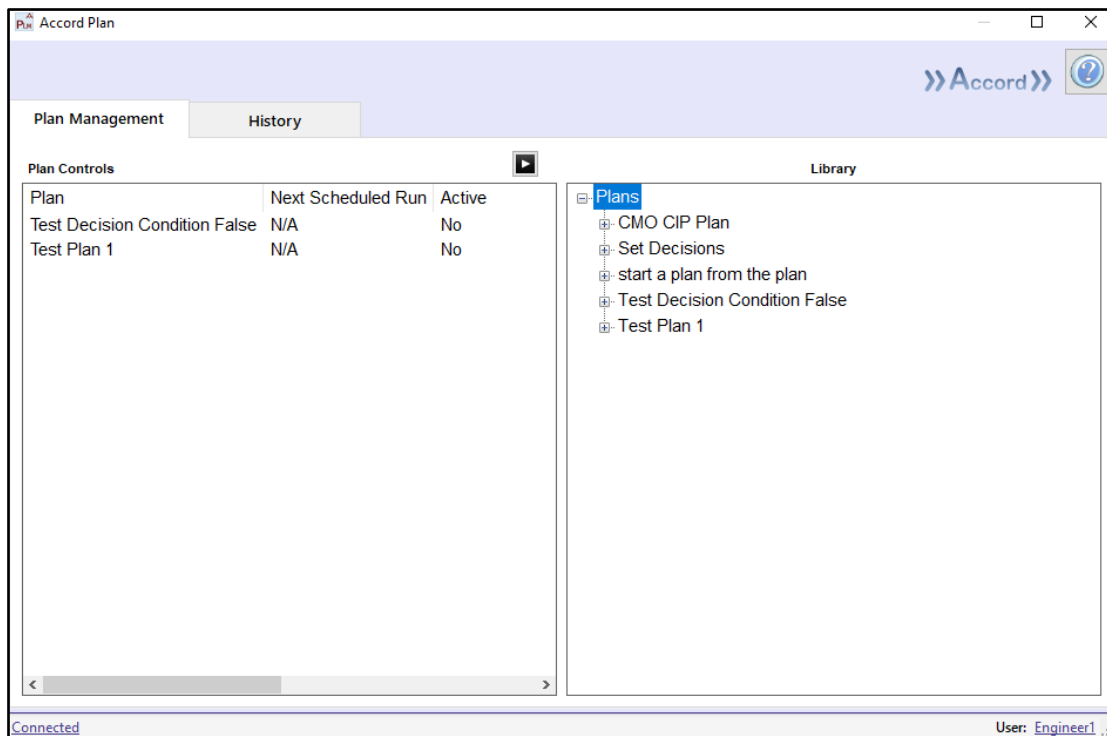
### 3 Plan Manager Screens

#### 3.1 Summary

This screen shows all controllable and created Plans.

When a Plan is saved, it is displayed on the right. When a Plan is dragged from the right to the left, it can be started manually.

Additional screens are available from the Plan Manager, this section will describe these popups and their functionality.

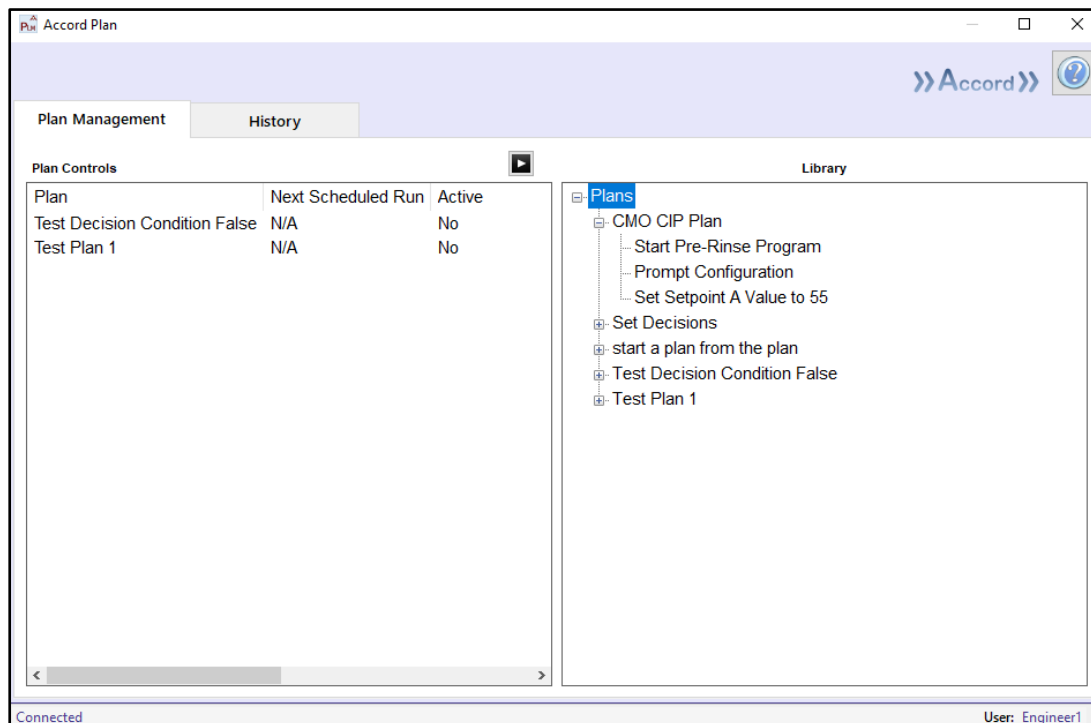


**Saved Plans**

### 3.2 Functionality

At the left of each Plan title within the library, there is a plus control which when clicked on allows to see all the steps of that Plan. These Plan step names are populated by giving each Plan row a name within the editor. These names can be used to breakdown the actions performed within a Plan.

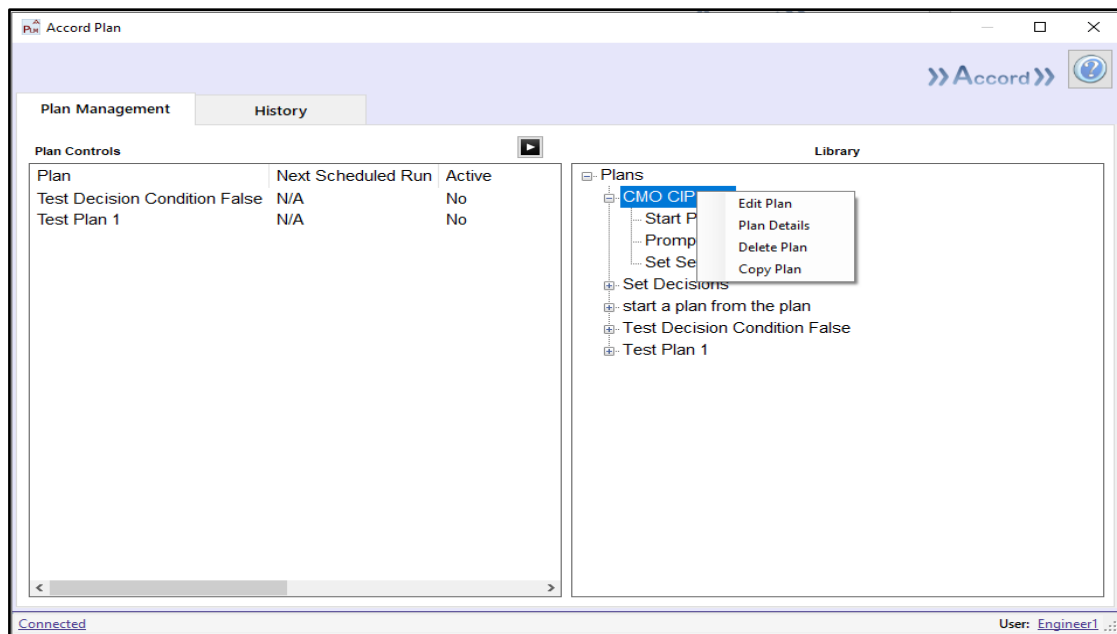
If a Plan is configured in Advanced Mode and contains a nested Plan, the nested Plan is also displayed. The nested Plan can be opened to view its steps.



#### *Plan Steps*

When the Plan title is right-clicked, a drop-down menu is displayed with the following options:

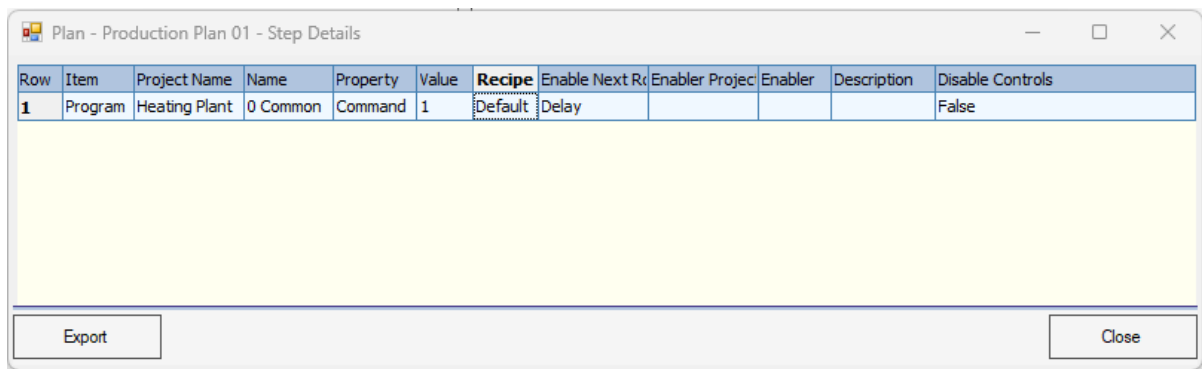
- **Edit Plan:** Menu selection opens Plan Configuration Form where new Rows can be added, or old ones reconfigured for the selected Plan.
- **Delete Plan:** Menu selection used to remove Plan.
- **Copy plan:** Menu selection enables user to create a copy of the Plan under the new Plan Title.
- **Plan Details:** Menu selection Form which displays all steps of the Plan. This is useful when Plan has a lot of Rows configured and contains multiple Plans within.



**Plan Drop-Down Menu**

The Plan Details view provides a full breakdown of all steps within the Plan, including steps in nested Plans. For Plans in Advanced Mode, triggers can also be accessed here.

Plan Details can be exported to Word using the export button at the bottom-left corner.



**Plan Details**

**CMO CIP Plan Plan Configuration:** 13 Oct 2023

Step	Step Type	Project Name	Item Name	Item Property	Item Value	Recipe Name	Enabler Type	Enabler Value	Disable Controls
1	Program	LP CMO CIP	Pre-Rinse	Command	1	Default	Program In Step	Pre-Rinse @ Pre-Rinse - Startup Step	True
2	HMI Prompt	LP CMO CIP					Prompt Confirmation		False
3	Setpoint	LP CMO CIP	Setpoint A	Setpoint	55		Program Finished	0 Safety	False

**Sample Exported Plan Details**

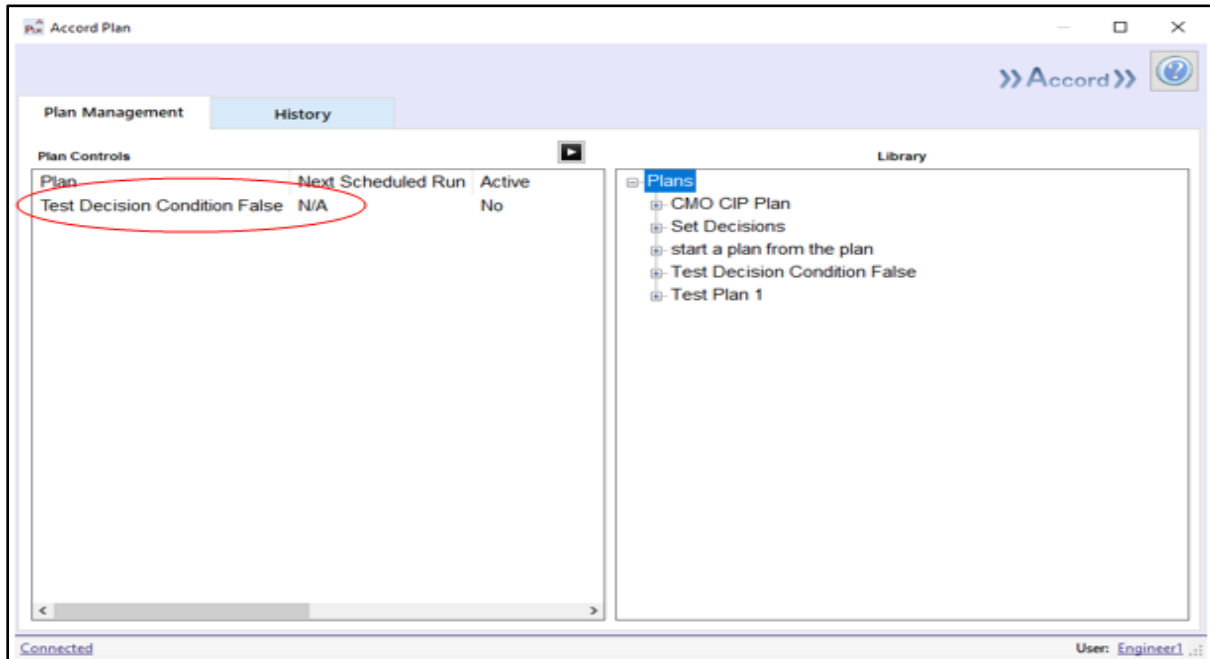
### 3.3 Plan Controls

To enable manual operation of a Plan:

The Plan is selected and dragged from the Library into the Plan Controls section on the left.

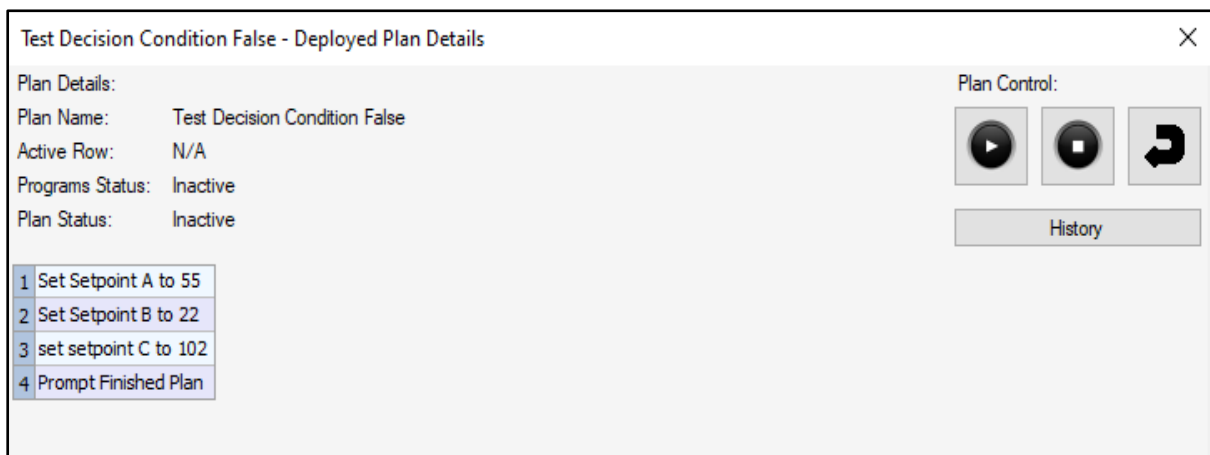
Once placed in the Plan Controls section, the Plan name, next scheduled run time, and active status are displayed.

Scheduled Plans that are not placed in left hand side can be. Placing in Left Hand side allows viewing and control .



**Plan Selected for Operating**

Additional Plan information can be obtained by double clicking the Plan name on the left.



**Plan Runtime Form**

The right side of the runtime form displays:

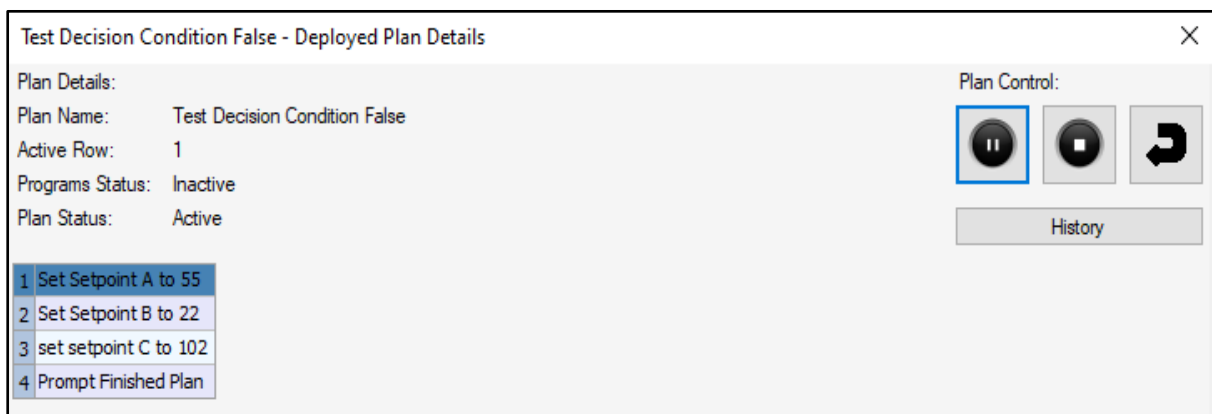
- **Plan Name:** Name given to the Plan.
- **Active Row:** If the Plan is active, this displays the number of the current active Plan row.
- **Program Status:** Shows a combined current status of Model programs which are currently controlled by the Plan. This includes; Active, Inactive, Hold, Alarm
- **Plan Status:** Active, Inactive, Paused or Error.

All steps within the Plan, including steps within nested Plans, are listed.

Plan operation can be controlled from this popup using three buttons:

- **Start/Hold Plan:** If the Plan is inactive, it is started. If the Plan is active, it is paused. An option is provided to pause all programs while the Plan is paused.
- **Stop Plan:** If the Plan is active, it is stopped. An option is provided to stop all programs currently running under the Plan.
- **Step through:** The Plan advances to the next Plan row.

**A History button is available to open a form showing completed Plan run details.**



**Active Plan Row**

During execution, the active row is highlighted in blue. The Plan status changes from Inactive to Active.

### 3.4 Plan History

When a Plan has finished execution, its details are stored in History. Plan Histories are accessible in the History panel.

Plan Id	Plan Name	Start	End
15	Test Decision Condition False	13/10/23 11:32:52	13/10/23 11:34:00
16	Test Decision Condition False	13/10/23 11:34:44	13/10/23 11:35:04
17	Test Decision Condition False	16/10/23 09:39:04	16/10/23 09:45:13
18	Test Decision Condition False	16/10/23 09:45:29	16/10/23 09:46:38

#### *Plan History*

The Plan history table shows all finished executions of the selected plan, with display of Plan Name, Start and End times.

A Search configuration is available, where a start time is selected using the **From** panel and an End time is selected using the **To** panel.

Other Plans can be viewed by changing the selected Plan name using the dropdown list. All available Plan names are displayed.

Plan Id	Plan Name	Start	End
15	Test Decision Condition False	13/10/23 11:32:52	13/10/23 11:34:00
16	Test Decision Condition False	13/10/23 11:34:44	13/10/23 11:35:04
17	Test Decision Condition False	16/10/23 09:39:04	16/10/23 09:45:13
18	Test Decision Condition False	16/10/23 09:45:29	16/10/23 09:46:38

**Select Available Plans**

A required Plan is selected, and the search icon is used to load its history. If **All** is selected instead of a specific Plan name, all available histories are displayed.

Plan Id	Plan Name	Start	End
1	Test Plan 1	02/10/23 09:51:47	02/10/23 09:52:12
2	Test Plan 1	02/10/23 09:52:39	02/10/23 09:54:57
3	Test Plan 1	02/10/23 09:58:53	02/10/23 10:00:16
4	Test Plan 1	02/10/23 10:00:21	02/10/23 10:02:20
5	Test Plan 1	02/10/23 10:02:47	02/10/23 10:08:37
6	Test Plan 1	02/10/23 12:47:36	02/10/23 12:49:30
7	Test Plan 1	02/10/23 12:50:34	02/10/23 12:52:13
8	Test Plan 1	02/10/23 13:00:21	02/10/23 13:01:59
9	Test Plan 1	02/10/23 14:07:41	02/10/23 14:09:24
10	Test Plan 1	02/10/23 14:10:15	02/10/23 14:10:25
11	Test Plan 1	02/10/23 14:13:45	02/10/23 14:15:49
12	Test Plan 1	02/10/23 14:21:32	02/10/23 14:25:42
13	Test Plan 1	02/10/23 14:31:53	02/10/23 14:34:17
14	Test Plan 1	02/10/23 14:34:35	02/10/23 14:34:43
15	Test Decision Condition False	13/10/23 11:32:52	13/10/23 11:34:00
16	Test Decision Condition False	13/10/23 11:34:44	13/10/23 11:35:04
17	Test Decision Condition False	16/10/23 09:39:04	16/10/23 09:45:13
18	Test Decision Condition False	16/10/23 09:45:29	16/10/23 09:46:38

**All Plans History**

## 4 Recipe Configuration

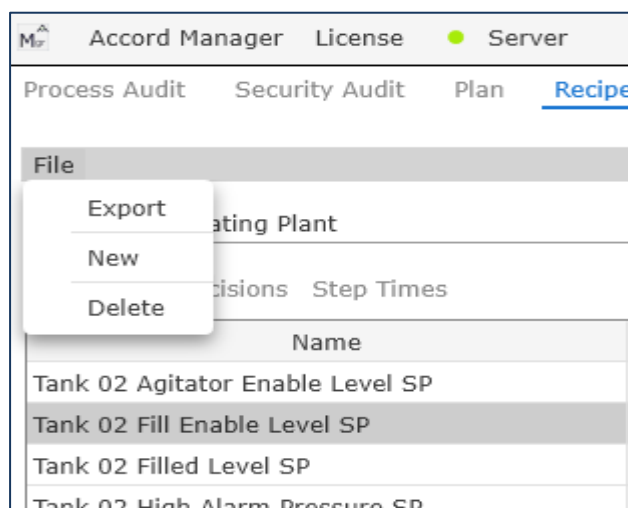
Each Program in the Model has a Default recipe with the following groups:

1. Setpoints
2. Step Times
3. Decisions

This default recipe cannot be deleted but can be modified. When a new Recipe is created it has the same setup as the Default recipe.

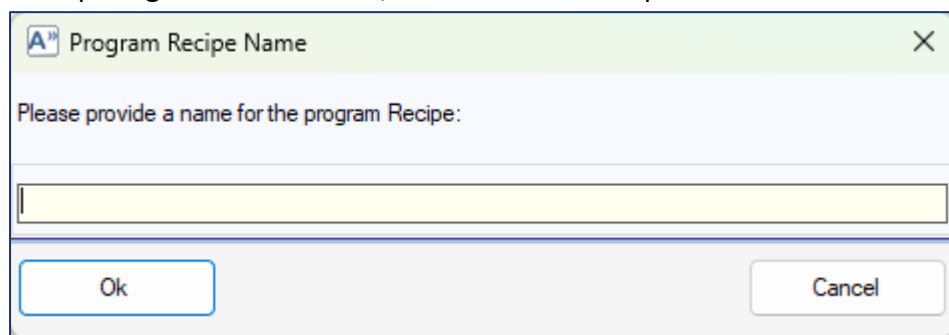
### 4.1 Adding and Deleting Recipes

A new recipe is added by selecting New under File.



**Recipe - File Functions**

A created Recipe is given a new name, which must be unique.



**New Recipe naming**

M Accord Manager License Server						
Process Audit Security Audit Plan <b>Recipe</b> Custom Report						
File						
Project: Heating Plant			Program: Transfer to Tank 02			
<a href="#">Setpoints</a> Decisions Step Times						
Name	Unit	Min	Max	Default	Crest 01	
Tank 02 Agitator Enable Level SP	m3	2.0000	6.0000	4.4000	4.4000	
Tank 02 Fill Enable Level SP	m3	6.0000	12.0000	8.0000	8.0000	
Tank 02 Filled Level SP	m3	10.0000	20.0000	15.0000	15.0000	
Tank 02 High Alarm Pressure SP	B	0.0000	10.0000	4.0000	4.0000	
Tank 02 Line Push Volume SP	m3	0.0000	3.0000	1.2000	1.2000	
Tank 02 Slow Fill Volume SP	m3	1.0000	3.0000	2.0000	2.0000	
Tank 02 Vent Pressure SP	B	2.0000	4.0000	3.0000	3.0000	
Transfer Temperature SP	*C	20.0000	60.0000	48.4000	48.4000	
Transfer VSD High Speed SP	Hz	0.0000	50.0000	40.0000	40.0000	
Transfer VSD Low Speed SP	Hz	0.0000	50.0000	20.0000	20.0000	

**Recipe Addition – New Program Added**

A recipe is deleted by clicking Delete under File and selecting the required recipe from the drop down menu.

Deleting a Recipe that is currently applied to and being used for a Program in the PLC which is Active does not alter any settings on the PLC however, it may result in the recipe name being displayed on HMI controls as 'Unknown'.

## 4.2 Configuring the Recipe

### 4.2.1 Setpoints

A program may contain one or more recipe Setpoints, as configured using Designer. Values for Setpoints can be modified in Setpoints section, with values presented side-by-side, along with the Units and the Min/Max range for that Setpoint.

M <sup>A</sup> Accord Manager License ● Server						
Process Audit Security Audit Plan <b>Recipe</b> Custom Report						
File						
Project: Heating Plant			Program: Transfer to Tank 02			
<a href="#">Setpoints</a> Decisions Step Times						
Name	Unit	Min	Max	Default	Crest 01	
Tank 02 Agitator Enable Level SP	m3	2.0000	6.0000	4.4000	4.4000	
Tank 02 Fill Enable Level SP	m3	6.0000	12.0000	8.0000	8.0000	
Tank 02 Filled Level SP	m3	10.0000	20.0000	15.0000	15.0000	
Tank 02 High Alarm Pressure SP	B	0.0000	10.0000	4.0000	4.0000	
Tank 02 Line Push Volume SP	m3	0.0000	3.0000	1.2000	1.2000	
Tank 02 Slow Fill Volume SP	m3	1.0000	3.0000	2.0000	2.0000	
Tank 02 Vent Pressure SP	B	2.0000	4.0000	3.0000	3.0000	
Transfer Temperature SP	°C	20.0000	60.0000	48.4000	52.6	
Transfer VSD High Speed SP	Hz	0.0000	50.0000	40.0000	42.4	
Transfer VSD Low Speed SP	Hz	0.0000	50.0000	20.0000	24.6	

**Recipe – Program Setpoints**

A Setpoint is changed by selecting the project and program and selecting the ‘Setpoints’ tab and entering the value for the Setpoint.

### 4.2.2 Step Times

Each Program has one or more Steps, and each Step has a step time for duration of the Step under normal circumstances. The Step Times section allows users to modify the step times, with times presented in columns for comparison.

Mr Accord Manager License ● Server

Process Audit Security Audit Plan Recipe Custom Report

---

File

Project: Heating Plant Program: Transfer to Tank 02

Setpoints Decisions Step Times

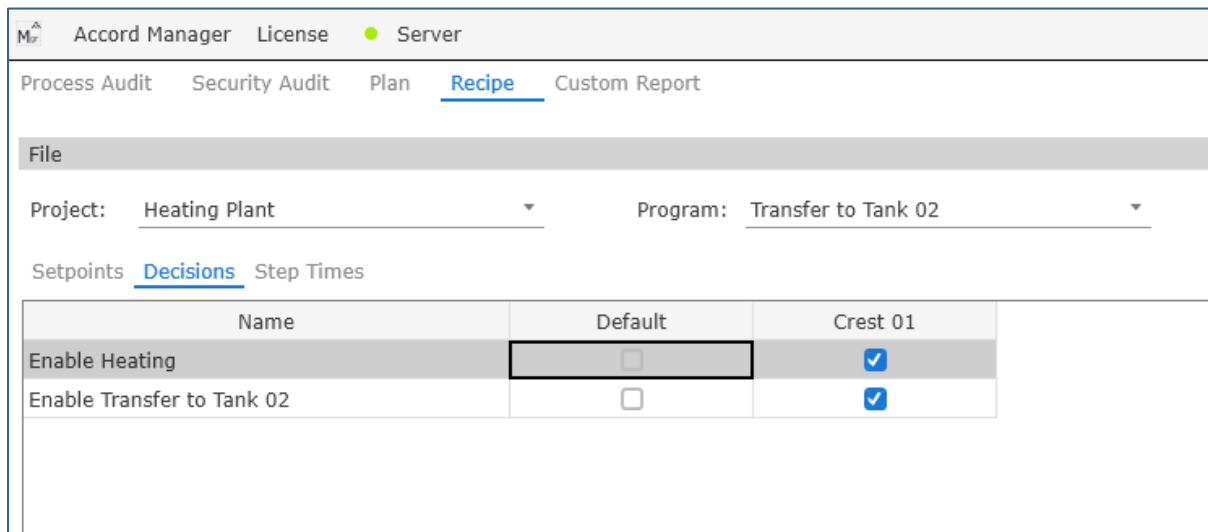
Name	Unit	Default	Crest 01
Transfer to Tank 02 - Initial Flush	Seconds	40	40
Transfer to Tank 02 - Pause	Seconds	120	120
Transfer to Tank 02 - Push to Drain	Seconds	20	20
Transfer to Tank 02 - Push to Tank 02	Seconds	20	20
Transfer to Tank 02 - Startup Step	Seconds	0	0
Transfer to Tank 02 - Transfer	Seconds	20	20

***Recipe – Program Step Times***

A Step Time is changed by selecting the project and program and selecting the 'Step Times' tab and entering the value for the Setpoint.

### 4.2.3 Decisions

Recipe Manager allows for the assignment of an Initial state for Decisions in a program recipe. Whenever the Recipe is applied, Accord Server will automatically place the Decision in the required initial state.

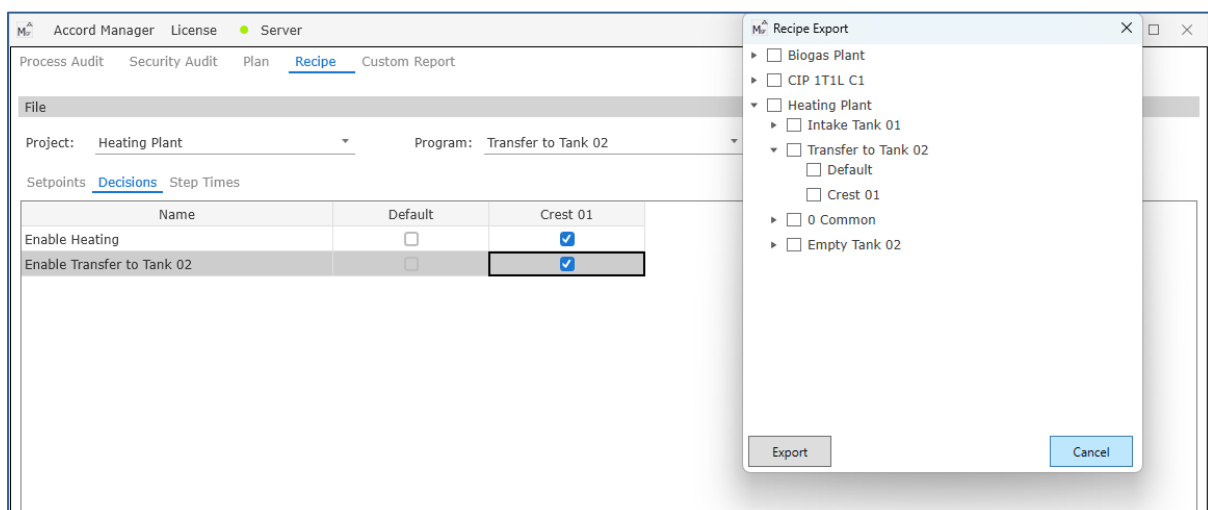


**Program Recipe – Decisions**

An initial State is given to a Decision by selecting the project and program and selecting the ‘Decision’ tab and Ticking or Unticking the ‘Decision’ for the required initial state.

### 4.3 Exporting the Recipe Report

A Recipe can be exported to pdf format for good record keeping. The Project, Program, Recipe can be selected and the export location folder can be specified.



**Program Recipe – Export**