

Accord Designer

User Guide

Server / Service

Document: [Accord Designer V4.12.1.0 User Guide - Service](#)

Table of Contents

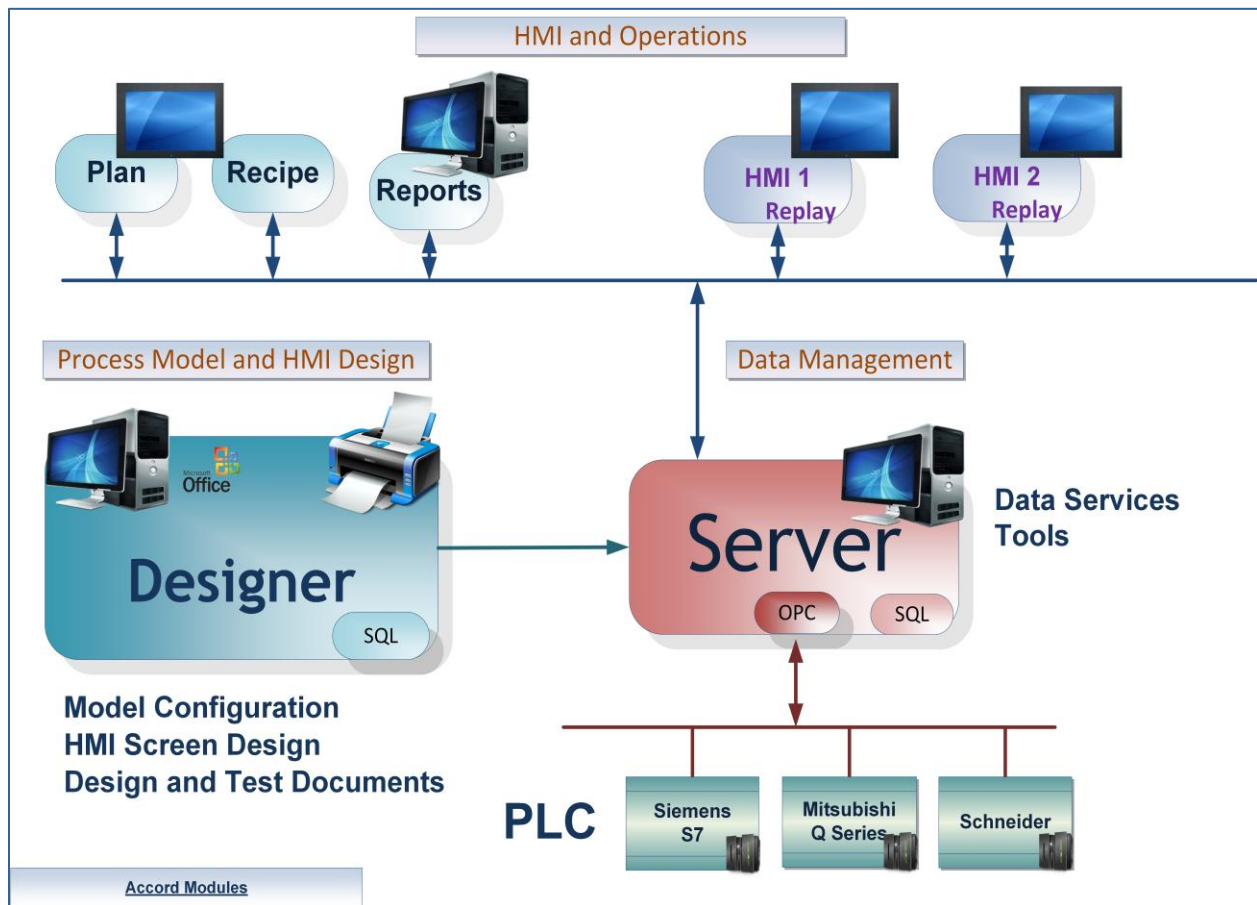
1	Introduction.....	4
2	Designer Layout.....	5
2.1	Designer Menus	6
2.1.1	License Menu	7
3	Server Menu	8
3.1	Online Mode	8
3.2	Restart.....	8
3.3	Report – Server Configuration	9
4	HMI Tasks.....	10
4.1	HMI Tasks Setup.....	11
5	Simulator	12
5.1	Simulation Profile Management.....	12
5.2	Configuration of the Profile	13
5.2.1	Setting Up / Editing a Row	14
5.2.2	Monitoring a Profile.....	17
6	Relay	18
6.1	Selection of Items	19
6.2	Setup of a Relay Item.....	20
6.3	Logging Setting.....	20
7	Data Integrity.....	21
8	Settings – Historian.....	22
8.1	Logging Device information	22
8.1.1	Activating/Deactivating Logging.....	23
8.1.2	Understanding Deadbands	23
8.2	Archiving Historical database	24

- 8.2.1 Data Archiving Status 25
- 9 Settings - Security 26
 - 9.1 Permissions 26
 - 9.1.1 Extra Permissions 27
 - 9.1.2 Device Aspects 29
 - 9.2 Groups and Users..... 30
 - 9.2.1 Adding a User 31
 - 9.2.2 Disabling a User..... 31
 - 9.2.3 Managing a User 31
 - 9.2.4 Assigning a User Group to a User 32
- 10 Settings – Communications 33
- 11 Server PC Setup..... 34
 - 11.1 Memory Threshold 34
- 12 Settings – Version 34
- 13 Settings – Licence..... 35

1 Introduction

Accord Designer provides a graphical environment for engineering personnel to develop process models and associated HMI screens for control systems.

Process Model development is carried out by configuring equipment and programs and HMI screens are developed by placing devices and programs onto the screens. All relevant linking and control is implemented automatically by the Accord Server service. Items are available in HMI, Recipe or other modules when initially configured in Designer.

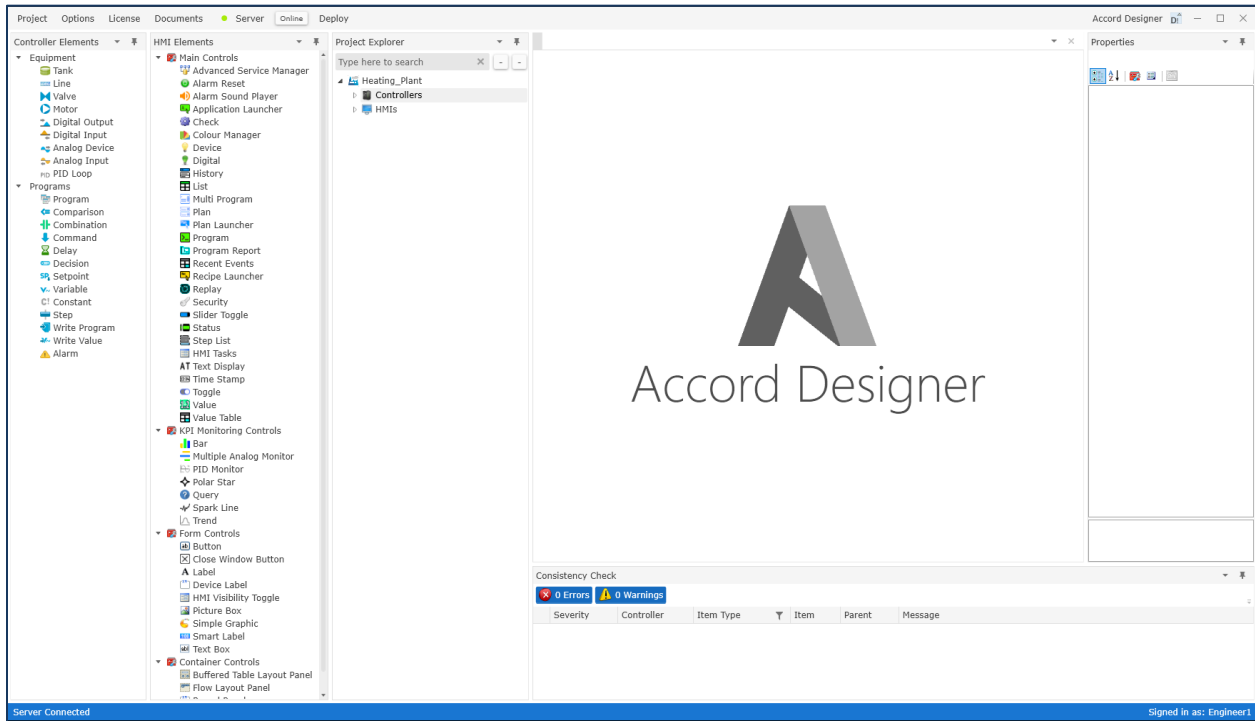


Accord Platform Modules

The Accord Modules may be hosted on single PC or distributed across many PC's.

See also Accord Installation V4.12 User Guide

2 Designer Layout



Initial Designer Screen, showing containers for Plant and Controllers and HMIs

The Designer window is comprised of the following:

- Top Level with Plant or overall system name
- A search window
- - Buttons for collapsing Open Controller or HMI menus
- Containers for controllers (PLC's or Emulators) and HMI's
- Toolboxes for HMI and Controller elements
- Centre Panel for HMI Screens
- Properties configuration section
- Consistency Check Section

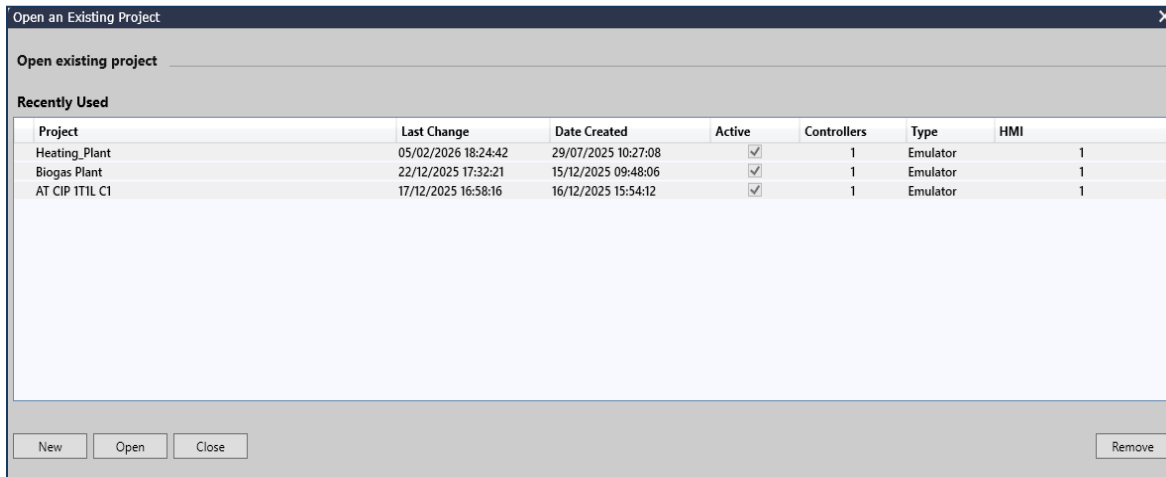
There is also information along the bottom border of Builder

- Status of Server connection
- Name of the signed in user

Panels may be detached and moved to different areas to suit the users workflow.

2.1 Designer Menus

The Project Menu allows a project to be Created (New) , Opened or Removed.



The list of Projects in the database is shown, with Dates of creation, last change, Active (in Server) status, the Number and type of Controllers and the Numbers of HMI applications.

The Options Menu contains Appearance Customization, for Theme, Font and Colour.

The Documents Menu provides to access the I/O List, Equipment SDS, Process Description, Process FDS and SDS documents.

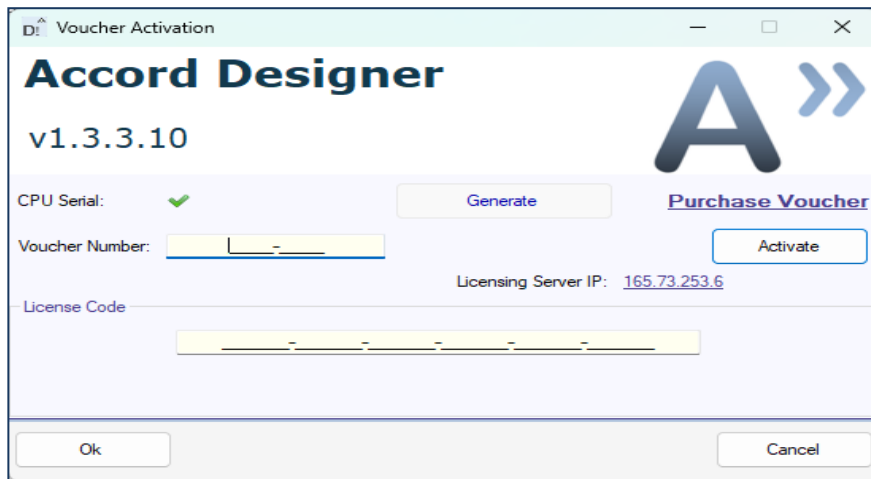
The Server Menu provides Restart of Server, the Configuration Report, Code Generator Utility, Settings, HMI Tasks, Simulator, Relay, Data Integrity and Events, described in Service User Guide.

2.1.1 License Menu

The License Menu shows a License Type (Development or Production), the Expiry date for the License, an option to buy a License, and the Product Version.

The Development License is used for system Design and Testing using Emulator and Simulator.

The Production License is used for site installations, with an OPC or Accord IPC license.



Licence Purchase is using a Voucher obtained from Logicon or agent. The new licence is enabled by entering the voucher code and pressing Activate.

3 Server Menu

The dot beside Server on top menu is green when Server is running and Red when not Running.

3.1 Online Mode

This shows a summary status of items in the controller by colour in the standard method

- Grey – Off or Manual Off or Inactive
- Green – On or Manual On or Active
- Red – Alarm or Error
- The Online mode is toggled on and off using the Online button.

3.2 Restart

This allows the Server to be Restarted. This action has no effect on a controller but may show items re-initialising on the HMI Screens.

The service must be restarted after changes to the following:

- Device Logging – changes to devices being logged or deadbands.
- Archiving – change to thresholds or date or time settings.
- Communications – changes to Port Numbers, for Advanced, Redundancy or ActiveX
- HMI – changes to any object Status text
- HMI – changes to Engineering Units text
- Addition or Removal of a Controller

The system may notify that a Restart is required.

3.3 Report – Server Configuration

This allows generation of a Word document containing the current configuration of Accord Server as a snapshot. Microsoft Word does not need to be installed to use this feature.

The following information is stored in the document:

Item	Description
Modules	The list of modules currently available in Accord Server along with an indicator stating if the module has been selected for use.
System Configuration	<p>Various settings and useful pieces of information relating to the computer Accord Server is currently installed on. The following is the list of items displayed here:</p> <ul style="list-style-type: none"> ○ Archiving Limit ○ Computer Name ○ SQL DB Version ○ SQL Server ○ Domain ○ Install Date ○ Install Location ○ Logging ○ Operating System ○ Performance ○ Accord Version ○ Processor Count ○ Memory ○ SMTP Server ○ Windows Users
OPC Configuration	Contains a listing of all OPC Profiles along with all settings relating to an OPC Profile, such as update rates, OPC Server and Channel/Device setups.
Project Configuration	Contains a listing of all Projects including detailed list of all entities in each project (Alarms, Programs, Devices, etc.), deadband & logging setup, security settings and project related schedule information.

4 HMI Tasks

The Task scheduler allows preconfigured writes to PLC to be setup to run at a future date and time, and on intervals afterwards if required. The Scheduler function is also as a control in HMI.

Project	Group	Device	Start Date	End Date	Last Run	Next Run	Interval	Status
Heating Plant	Program	Intake Tank 01	19/01/26 08:00:00	23/01/26 00:00:00	Never	19/01/26 08:00:00	01:00:00:00	Enabled

Buttons: New, Edit, Disable Selected, Delete Selected, Close

The Properties of a Scheduled Task are:

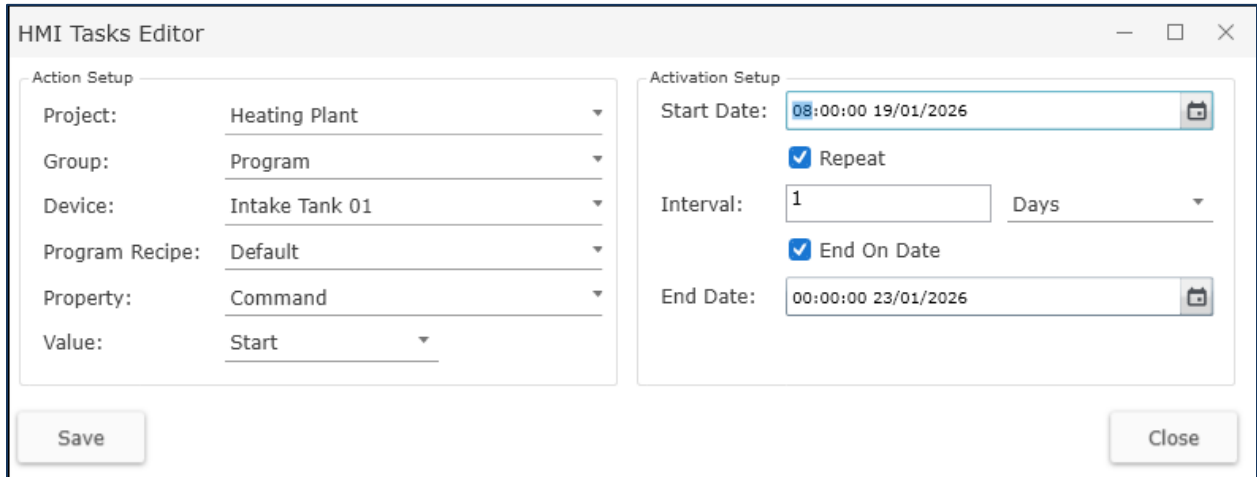
Item	Description
<input type="radio"/> Project	The name of the project that contains the device to be modified.
<input type="radio"/> Group	The name of the group for the device to be modified.
<input type="radio"/> Device	The name of the Program or Equipment item to be affected.
<input type="radio"/> Start	The date when the action will be performed for the first time.
<input type="radio"/> End	The date when the action will no longer be performed.
<input type="radio"/> Last Run	The date when scheduled task last performed the requested action.
<input type="radio"/> Next Run	The date when scheduled task will next perform the requested action.
<input type="radio"/> Interval	The time interval for repeat of the action

The buttons for Task Schedule provide for the following

- New:** Create a new Schedule – See below regarding the Schedule Editor.
- Edit:** Edit the selected Schedule – See below regarding the Schedule Editor.
- Enable / Disable Selected:** Toggle Enabling the item
- Delete Selected:** Delete the currently selected Schedule.

The groups for items that can be affected are Analog and Digital Devices and PID Loops., Decisions, Setpoints, Programs and Commands.

4.1 HMI Tasks Setup



Schedule Editor

This allows for the selection of the project, the item Group and the Device to be managed and the property of the Device to be changed.

The required Value may be entered or selected from the possible choices.

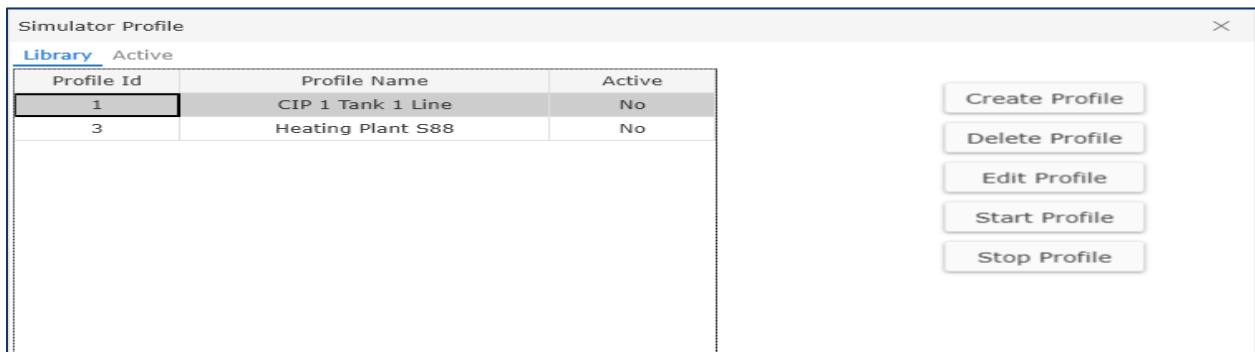
A Start Date and Time may be entered using the Calendar and 'Repeat' may be selected and the Interval entered if the task is to be recurring. An End Date and Time can be selected for ending the recurrence.

5 Simulator

The Simulator provides the ability to simulate device states and values to enhance modelling and testing. The items to be changed and the enabler events which cause the change are shown in rows and set up using drop down menus. The rows are contained in Profiles. The Simulator implements for the rows when the Profile is started/active. It is possible to have many different profiles and easily switch between them by starting and stopping. A viewer which shows status of enablers and current values for status of rows in active profiles is also provided.

The Simulator can provide a good approximation of plant functions but it might not be exact, due to PC resources and timing functions

5.1 Simulation Profile Management



List of Profiles with management buttons and Active Status column

This Profile Management is shown when Simulator is accessed from the Server Menu. It shows existing profiles. A profile is Active status if it is Started and the simulator is actively using it.

Profiles are Started and Stopped using the Start Profile and Stop Profile buttons.

Profiles are Created and Removed using the Create Profile and Delete Profile buttons.

The Profile editor is activated when the profile is selected and Edit button is pressed.

5.2 Configuration of the Profile

The Profile configuration is presented as Rows and Columns, where each Row is a separate action to be carried out by the Simulation Module and the columns provide configuration of the action.

Simulator Configuration X

Profile Name Simulation

ID	Used	Type	Controller	Item	Enabler Type	Enabler Controller	Enabler Item	Check	Check Value	Delay	Write	Change	Period	Limit	With Row
	<input checked="" type="checkbox"/>	Analog Input	Heating Plant	Tk01 LT01 Level	Valve	Heating Plant	Tk01 V01 Inlet	Active		2		0.1	1	10	
	<input checked="" type="checkbox"/>	Analog Input	Heating Plant	Tk02 LT01 Level	Valve	Heating Plant	Tk02 V01 Inlet	Active		2		0.1	1	10	
	<input checked="" type="checkbox"/>	Analog Input	Heating Plant	TT03 Line Temperature	Analog Output	Heating Plant	CV03 Heating Control	>	30	1		1	1	50	
	<input checked="" type="checkbox"/>	Analog Input	Heating Plant	FT01 Transfer Flow Rate	Motor	Heating Plant	P01 Product Transfer	Active		3		1	3	20	
	<input checked="" type="checkbox"/>	Digital Input	Heating Plant	Tk01 LSH01 High Level	Analog Input	Heating Plant	Tk01 LT01 Level	>	9.6	1					
	<input checked="" type="checkbox"/>	Digital Input	Heating Plant	Tk01 LSL01 Low Level	Analog Input	Heating Plant	Tk01 LT01 Level	<	0.2	1					
	<input checked="" type="checkbox"/>	Digital Input	Heating Plant	Tk02 LSH01 High Level	Analog Input	Heating Plant	Tk02 LT01 Level	>	9.6	1					
	<input checked="" type="checkbox"/>	Digital Input	Heating Plant	Tk02 LSL01 Low Level	Analog Input	Heating Plant	Tk02 LT01 Level	<	0.3	1					
	<input checked="" type="checkbox"/>	Variable	Heating Plant	Tank 02 Volume Pushed	Step	Heating Plant	Transfer to Tank 02 - Pu	Active		1		0.1	1	20	
	<input checked="" type="checkbox"/>	Variable	Heating Plant	Tank 02 Volume Transferred	Valve	Heating Plant	Tk02 V01 Inlet	Active		1		0.1	1	20	
	<input checked="" type="checkbox"/>	Analog Input	Heating Plant	Tk01 LT01 Level	Valve	Heating Plant	Tk01 V02 Outlet	Active		1		-0.2	1	0	
	<input checked="" type="checkbox"/>	Analog Input	Heating Plant	Tk02 LT01 Level	Valve	Heating Plant	Tk02 V02 Outlet	Active		1		-0.1	1	0	
	<input checked="" type="checkbox"/>	Analog Input	Heating Plant	TT03 Line Temperature	Analog Output	Heating Plant	CV03 Heating Control	<	12	1		-0.3	1	10	
	<input checked="" type="checkbox"/>	Variable	Heating Plant	Tank 02 Volume Flushed	Step	Heating Plant	Transfer to Tank 02 - In	Active		2		0.1	1	10	
	<input checked="" type="checkbox"/>	Variable	Heating Plant	Tank 02 Volume Pushed	Step	Heating Plant	Transfer to Tank 02 - Pu	Active		2		0.1	1	10	

Move Row Up

Move Row Down

Add Row

Delete Row

Edit Row

Copy Row

Export Profile

Import Profile

Save Close

Sample Profile Configuration

A new row is included by using Add Row and a row is removed using Delete Row. Rows can be copied using Copy Row. Rows can be moved up or down for presentation and readability. The Profile can be exported to, and imported from, Excel for faster configuration.

5.2.1 Setting Up / Editing a Row

Simulator Row Details
✕

Type:	Analog Input ▼
Used:	<input checked="" type="checkbox"/>
ID:	<input type="text"/>
Controller Name:	Heating Plant ▼
Item:	Tk02 LT01 Level ▼
Enabler Type:	Valve ▼
Enabler Controller Name:	Heating Plant ▼
Enabler Item:	Tk02 V01 Inlet ▼
Check:	Active ▼
Delay:	<input type="text" value="2"/>
Periodic:	<input checked="" type="checkbox"/>
Change:	<input type="text" value="0.1"/>
Period:	<input type="text" value="1"/>
Limit:	<input type="text" value="10"/>
With:	<input type="text"/>

Save

Close

Editing Panel for a Simulator Row

Definitions for the Panel

1. Item to be effected
- “Type” dropdown is used to select the required Item type
- “Used” cell enables the row. The row is only evaluated processed if Used is ticked.
- “ID” allows a unique name to be given to the Row.

“Controller” is the controller hosting the Target item

“Item” is the Device to be changed.

The following item types are available to be effected:

Digital Input -	Selection of a Digital Input to go True/False
Analog Input -	Selection of a Analog Input to go to a Value
Valve Fail -	Selection of a Valve to have Fail/Alarm status
Motor Fail -	Selection of a Motor to have Fail/Alarm status
Analog Fail -	Selection of a Analog Input will go to Fail/Alarm status
Variable -	Selection of a Variable to go to a Value

2. Enabler Item is the cause of the change on the Item being effected

The following item Types are selectable:

Always - Row is always be active.

Following as active when selected item is active / inactive (per “Check”)

Valve

Motor

Digital Input

Digital Output

Comparison

Combination

Step

Decision

Command

Delay

Following as active when the selected item is above / below a specified value (per “Check” and Check Value)

Analog Input

Analog Output

Variable

3. “Check” is for the state to be used active / inactive , to enable the Row.

4. “Delay” is the number of seconds that Simulator waits to implement the row after the Enabler becomes Active

5. “Change”: If the Row Type is set to Analog Input or Variable, the Simulation Module can either write a configured value once the row is activated, or change the value by a set amount per time period to a limit.
6. “Periodic” means the target value will be changed every number of seconds given by Period, by the “Change” amount Value will be changed incrementally, until the “Limit” is reached. If “Periodic” is not ticked then the Row is a “Write”, on Enabler at the “Check” state.

To set the configured single value, simply enter the value beside “Write” .

To set a changing value, follow the following steps:

Enter the value by which the device will increment beside “Change”.

Enter the time (in seconds) between each increment beside “Period”.

Set the limit at which the incrementation will stop beside “Limit”.

7. “With” is an option to refer to an Id of another Row.
This row is then only executed if the other Row in the Id is also true, being executed.
This allows better synchronisation between values being changed.

The Row is saved by pressing Save button.

The Profile is Saved by pressing Save button on the Configuration panel.

5.2.2 Monitoring a Profile

When a Profile is Active it may be viewed to see if Rows are implemented.

The Profile is accessible in the Active section, selected using the dropdown of Active Profiles.

Simulator Profile

Library Active

Active Profiles: Simulation

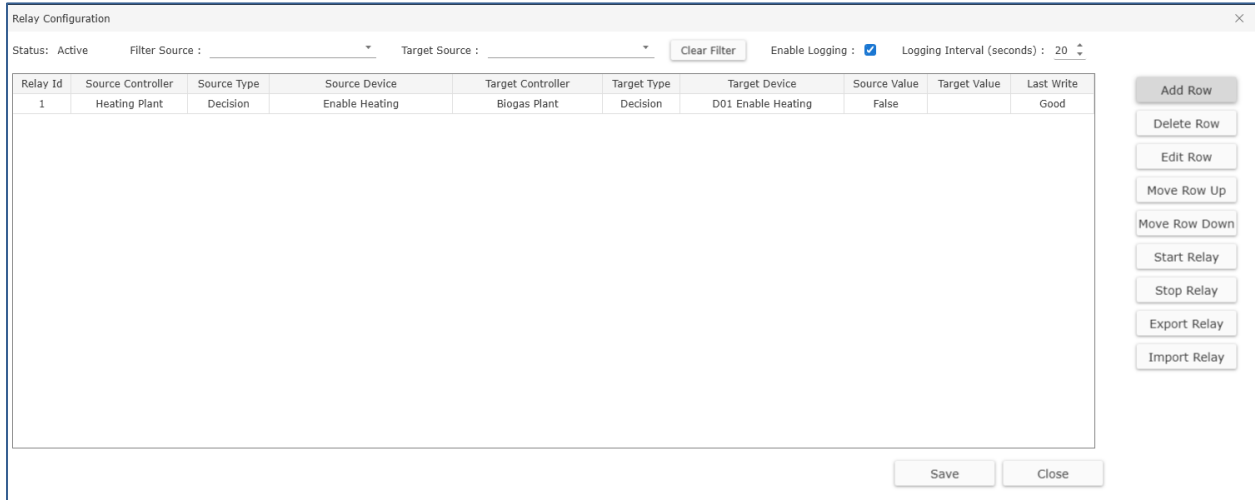
Row	ID	Used	Type	Controller	Item	Device Resu	Enabler Type	Enabler Controller	Enabler Item	Check	Check Va	Delay	Write	Change	Period	Limit	With Row
1		<input checked="" type="checkbox"/>	Analog Input	Heating Plant	Tk01 LT01 Level	0.00	Valve	Heating Plant	Tk01 V01 Inlet	Active		2		0.1	1	10	
2		<input checked="" type="checkbox"/>	Analog Input	Heating Plant	Tk02 LT01 Level	0.00	Valve	Heating Plant	Tk02 V01 Inlet	Active		2		0.1	1	10	
3		<input checked="" type="checkbox"/>	Analog Input	Heating Plant	TT03 Line Temperature	10.00	Analog Output	Heating Plant	CV03 Heating Control	>	30	1		1	1	50	
4		<input checked="" type="checkbox"/>	Analog Input	Heating Plant	FT01 Transfer Flow Rate	0.00	Motor	Heating Plant	P01 Product Transfer	Active		3		1	3	20	
5		<input checked="" type="checkbox"/>	Digital Input	Heating Plant	Tk01 LSH01 High Level	False	Analog Input	Heating Plant	Tk01 LT01 Level	>	9.6	1					
6		<input checked="" type="checkbox"/>	Digital Input	Heating Plant	Tk01 LSL01 Low Level	True	Analog Input	Heating Plant	Tk01 LT01 Level	<	0.2	1					
7		<input checked="" type="checkbox"/>	Digital Input	Heating Plant	Tk02 LSH01 High Level	False	Analog Input	Heating Plant	Tk02 LT01 Level	>	9.6	1					
8		<input checked="" type="checkbox"/>	Digital Input	Heating Plant	Tk02 LSL01 Low Level	True	Analog Input	Heating Plant	Tk02 LT01 Level	<	0.3	1					
9		<input checked="" type="checkbox"/>	Variable	Heating Plant	Tank 02 Volume Pushed	0.00 m3	Step	Heating Plant	Transfer to Tank 02 - Push to Drain	Active		1		0.1	1	20	
10		<input checked="" type="checkbox"/>	Variable	Heating Plant	Tank 02 Volume Transferred	0.00 m3	Valve	Heating Plant	Tk02 V01 Inlet	Active		1		0.1	1	20	
11		<input checked="" type="checkbox"/>	Analog Input	Heating Plant	Tk01 LT01 Level	0.00	Valve	Heating Plant	Tk01 V02 Outlet	Active		1		-0.2	1	0	
12		<input checked="" type="checkbox"/>	Analog Input	Heating Plant	Tk02 LT01 Level	0.00	Valve	Heating Plant	Tk02 V02 Outlet	Active		1		-0.1	1	0	
13		<input checked="" type="checkbox"/>	Analog Input	Heating Plant	TT03 Line Temperature	10.00	Analog Output	Heating Plant	CV03 Heating Control	<	12	1		-0.3	1	10	
14		<input checked="" type="checkbox"/>	Variable	Heating Plant	Tank 02 Volume Flushed	0.00 m3	Step	Heating Plant	Transfer to Tank 02 - Initial Flush	Active		2		0.1	1	10	
15		<input checked="" type="checkbox"/>	Variable	Heating Plant	Tank 02 Volume Pushed	0.00 m3	Step	Heating Plant	Transfer to Tank 02 - Push to Tank	Active		2		0.1	1	10	

Close

Rows which are being implemented, due to Enabler state, have a blue background.

6 Relay

Relay provides transfer of states or values between controllers. The Transfer takes place using Accord Server, which copies values from the Source controller to the Target controller.



Accord Relay Setup

The Relay profile is common, - one profile for each Server, managing multiple controllers.

Each row is set up using the Edit Row button. Rows may be added or deleted or Moved Up or Down for presentation purposes. The configuration may be exported to Excel and imported from Excel for faster configuration.

The Relay system is started using Start Relay and ended using Stop Relay.

The Relay module operates within Server and will continue to operate if Designer is ended.

6.1 Selection of Items

Values can be mapped from registers in one PLC to registers in another using drop down menus. Pressing the Add Button displays a configuration popup for a Row.

Source PLC

Target PLC

Digital Type

- Valve Active
- Valve Alarm
- Motor Active
- Motor Alarm
- Digital Output Active
- Digital Input Result
- Decision
- Comparison
- Combination
- Delay
- Program Active
- Program Running
- Program Hold
- Program Alarm
- Program TimeHold
- Unit Error
- Unit Selected

Decision

Analog Type

- Analog Input Value
- Analog Device Value
- Setpoint
- Variable
- Lifebyte
- Program Step Nr

Variable

6.2 Setup of a Relay Item

The Setup of a Relay Row is carried out by Drop Down, where the Project (Controller), Type and Device is selected for the Source Item and then for the Target Item. The Target Item can only be of type Decision for a Digital Type and Variable for an Analog Type.

Relay Row Configuration	
Source Controller:	Heating Plant
Source Type:	Analog Input Value
Source Device:	Tk02 LT01 Level
Target Controller:	Heating Plant C2
Target Type:	Variable
Target Device:	Tank 02 Capacity

Setup of a Single Relay Item

6.3 Logging Setting

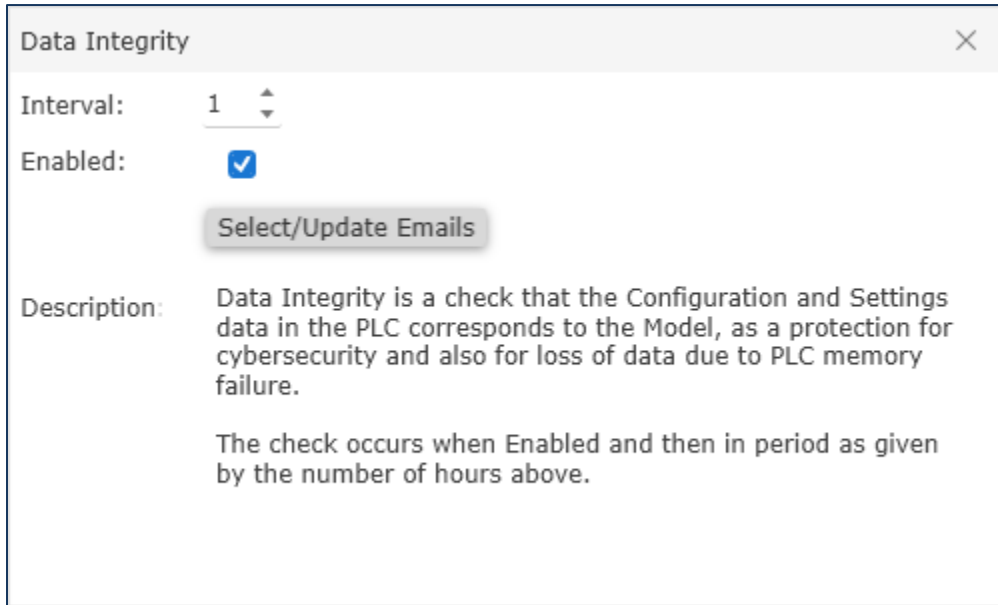
The Data Transfers are logged if Enable Logging is selected at top of Configuration. The logging check interval number of seconds can be changed.

7 Data Integrity

Data Integrity provides periodic verification that the settings and configuration of model in the PLC is the same as the offline database. This is a cybersecurity check. Server will send a mail describing any differences to nominated email addresses.

The verification runs every number of hours in the Interval; the minimum and default is 1.

The process must be selected as Enabled to run.



Setup of a Data Integrity check

Alarms for discrepancies can be emailed to persons. Clicking on Select/Update Emails allows the selection of email accounts to receive notifications.

8 Settings – Historian

8.1 Logging Device information

Devices allows users to configure the Logging and Deadband settings for specific devices on a given Project. By default, all Alarms and Program are automatically logged. Although it is not possible to deselect logging for Alarms, it is possible to deselect logging for Programs. Logging on Programs should only be deselected if information relating to them is no longer required for reporting purposes. Additionally, some groups, such as Analog Device, contain configurable Deadbands. Deadbands are used as a logging threshold for a given device and can help avoid large quantities of unnecessary data being logged in the database.

The screenshot shows the 'Server Settings' dialog box with the 'Historian' tab selected. The 'Logging and Deadband Configuration' section is active, showing settings for 'Heating Plant' and 'Analog Input' group. A table lists the following devices and their configurations:

Device Name	Logged	Deadband	Min	Max
FT01 Transfer Flow Rate	<input checked="" type="checkbox"/>	1	0	100
Tk01 LT01 Level	<input checked="" type="checkbox"/>	0.1	0	12
Tk01 PT01 Pressure	<input checked="" type="checkbox"/>	0.1	0	5
Tk01 TT01 Temperature	<input checked="" type="checkbox"/>	1	0	100
Tk02 LT01 Level	<input checked="" type="checkbox"/>	0.1	0	20
Tk02 PT01 Pressure	<input checked="" type="checkbox"/>	0.1	0	5
Tk02 TT01 Temperature	<input checked="" type="checkbox"/>	1	0	100
TT03 Line Temperature	<input checked="" type="checkbox"/>	1	0	100

At the bottom of the dialog box are buttons for 'OK', 'Apply', and 'Close'.

Logging individual devices in Historian

8.1.1 Activating/Deactivating Logging

To Activate/Deactivate Logging on a particular device:

Select 'Devices' under the 'Historian' in Server Settings and select the desired project from the 'Project' list and the group from the 'Group' list. Then Tick or Untick the 'Logged' box for the appropriate device and enter a value for the Deadband.

Note 1: It is not possible to configure logging for Alarms, Program Events, or Setpoints as changes to these are always logged.

Note 2: Deactivating Logging for a device will not delete any history previously recorded for that device.

There are Functions for Set All, Reset All, and Export to csv, these are under Right-Click.

8.1.2 Understanding Deadbands

Accord Server allows define deadbands on a number of properties for various devices for efficiency for storage space. When a deadband is defined, Accord Server will only log data for a device under the following circumstances:

1. If the change was greater than or equal to the amount defined deadband.
2. If any other property changes regardless of the deadband amount.

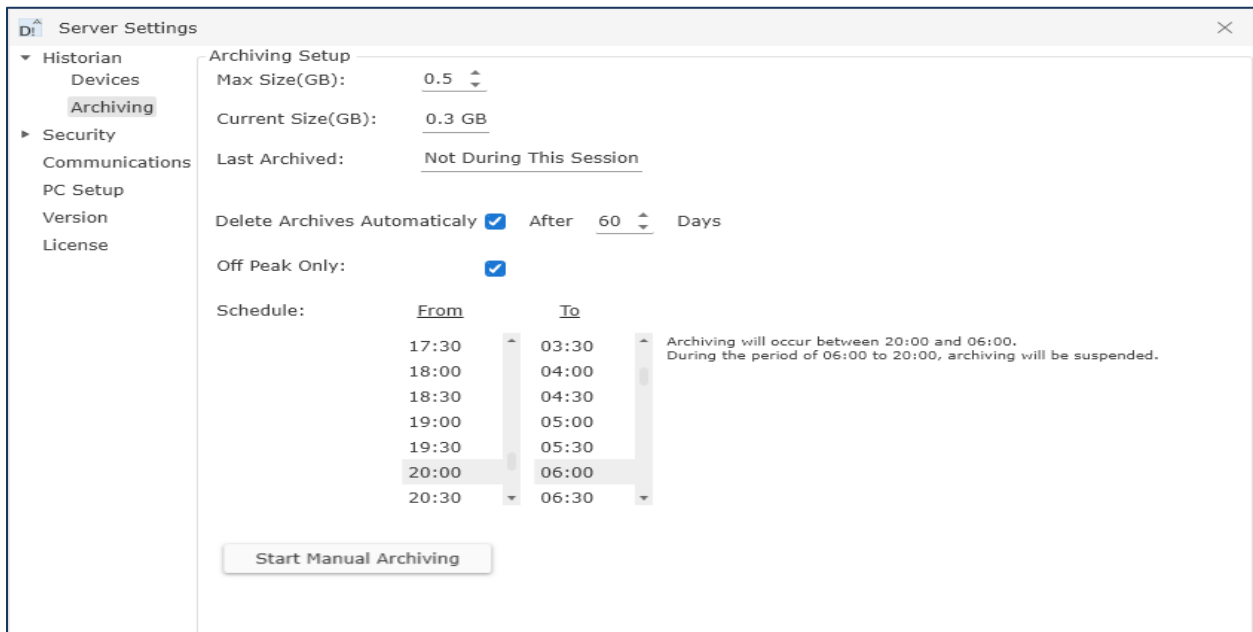
It is important to understand the second condition, as it may result in confusion when viewing historical data. For example, an Analog Input has a Value property and an Alarm LL property. If Value has a deadband of 1.0 applied and the last logged Value was 3.0, then based on rule 1, the next time a log entry should be created is when the value rises or falls by 1.0 or more. If however, the Alarm LL trigger is the value of 3.5, and Value changes to 3.5, triggering the Alarm LL flag, then a new entry will be created, saving both the Alarm LL flag and the Value regardless of the deadband. The reason for this is because Accord Server ensures all data saved in the historical log is consistent, and since the Alarm LL was triggered by a Value of 3.5 and not 3.0, it is necessary for this to be reflected in the historical data.

Note: Not all groups have configurable deadbands. Configurable deadbands always appear adjacent to the Logged column.

8.2 Archiving Historical database

Archiving allows users to define the maximum allowable database size before data is automatically transferred to a new archived database. An archived database contains all information contained in the current database, including data and configuration settings, up to the moment the archiving procedure was triggered. Once archiving has completed, all historical data and security audit logs present in the archived database are deleted and the database compressed to free up space for additional logs.

Archiving allows for the configuration of automated deletion of archive databases beyond a specified age to manage disk space. Archiving allows configuration of an off-peak schedule for scheduling archiving to only occur between required times to manage PC performance.



Historian Archiving Setup

Enter required value for the Maximum Size of archives.

Enable Automatic Deletion of archives by ticking the selection 'Delete Archives Automatically' and select the age in 'Days'. Archives older than this 'Days' value will be deleted.

Tick 'Off Peak Only' to enable archiving at non-production times, and select the appropriate times using the from the 'To' and 'From' fields to define the time frame for the Off Peak Schedule. Last Archived shows the date and time that Server last performed an archiving function.

Archiving may be initiated using Start Manual Archiving button.

8.2.1 Data Archiving Status

Accord will automatically archive the database when a configured max allowed size is reached. It also shows the database size at time of check, and the max allowed / threshold size, at which size the archiving is carried out.

Data Archiving ×	
Property	Current Value
Last Run	15/09 15:14:15
Next Run	15/09 16:14:15
Last Archived	Not During This Session
Database Size (Max Allowed)	0.5 GB
Database Size (Last Check)	0.3 GB

9 Settings - Security

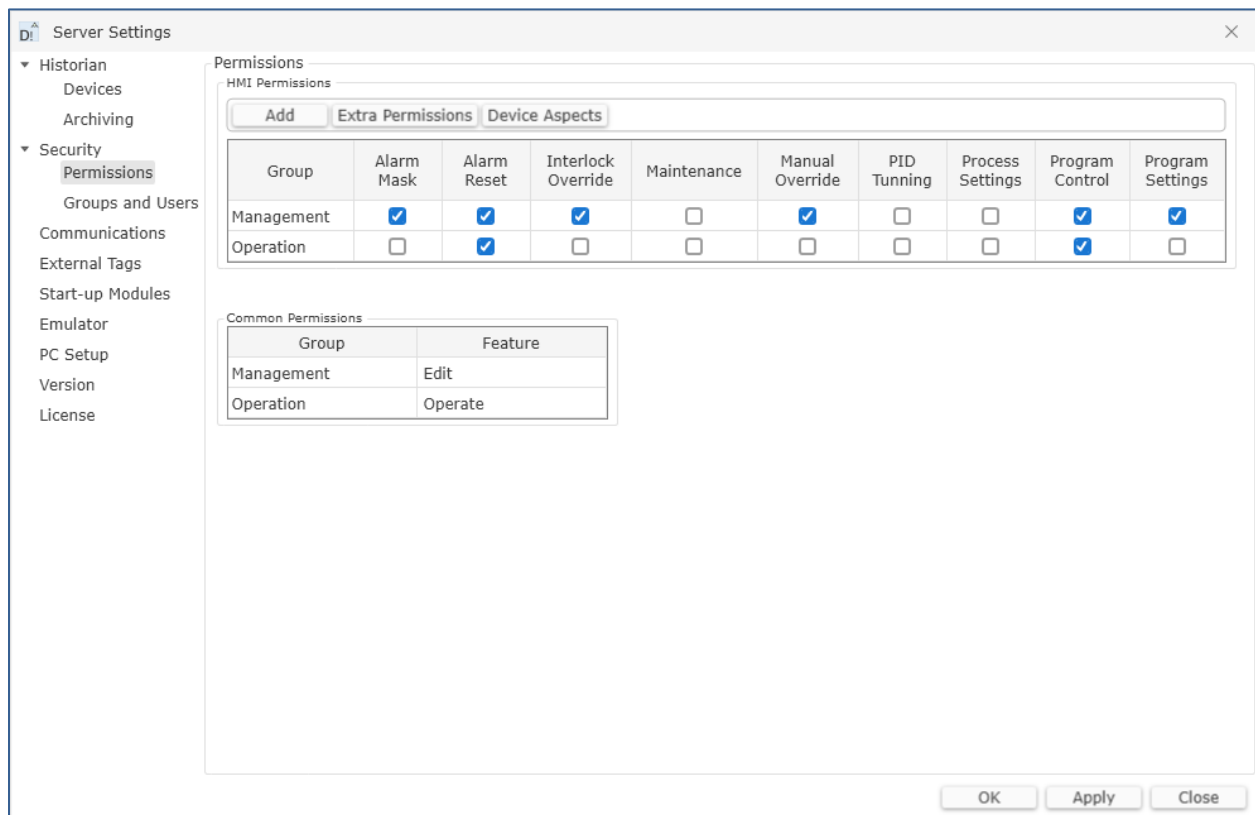
9.1 Permissions

Permissions allows the user to apply permissions for functions on HMI. A logged in user is permitted access to functionality if the user has been assigned to the permitted User Group, or the function is enabled for all users.

HMI Permissions allow Operation on HMI screens for the function,

Common Permissions are for other modules – Reports and Plans etc, and this has two levels: Operate and Edit. Operate allows the user to run Reports, and Start and stop Plans, and Edit permission allows the user to create or edit Reports or Plans. Edit is an Engineering or Management level permission.

Permissions must be assigned, if they are blank then there is no access for the group.



Permissions for User Groups

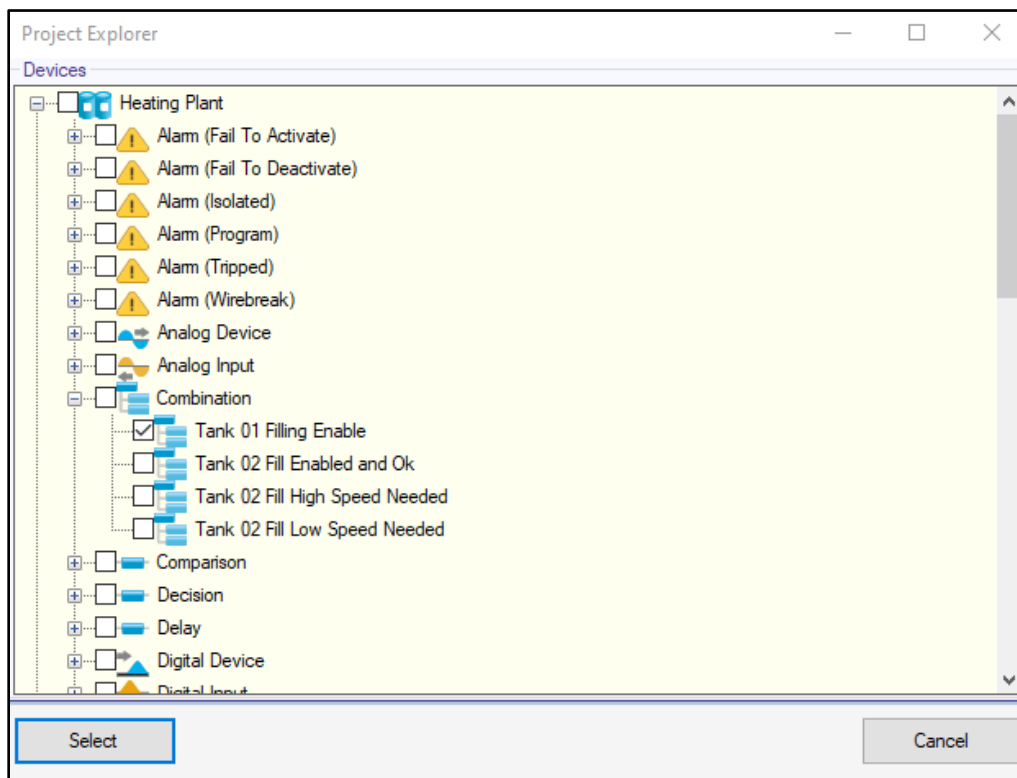
9.1.1 Extra Permissions

To add extra permissions, click on the group to which permissions must be added. Click on the 'Extra Permissions' button, it will open the window where Extra Permissions can be selected.



Extra Permissions table

Click "Add" button to open Project Explorer.



Device Selection

Select device required from the list by ticking a checkbox.

One or more devices can be selected at the same time. When all required devices selected, click Select button to confirm selection.

Extra Permissions
✕

Project	Device	Group	Security Group	Permitted
Heating Plant	Tank 01 Filling Enable	CombinedCondition	Management	<input checked="" type="checkbox"/>

Add Remove Save Close

Selected Permissions

Extra Permissions form shows all the permissions selected. To remove a permission, click on required permission and then click the 'Remove' button to remove it from the list, then click 'Save' button.

9.1.2 Device Aspects

Click 'Device Aspects' button to load information about device types applicable to different HMI permission aspects.

Aspects	Device Types	Applicable To
		PR - Program, AD - Analog Device, AI - Analog Input, DD - Digital Device, DI - Digital Input
Alarm Mask	Digital Device	[DD - Alarm Masked]
Alarm Reset	Program, Digital Device, Analog Input, Digital Input	[PR - Program Alarm], [AI -Wirebreak], [DD,DI - Alarm]
Interlock Overrides	Digital Device	[DD - Intl Override, Override RFA.]
Maintenance	Analog Device, Analog Input, Digital Device, Digital Input	[AD, AI, DD, DI - Maintenance]
Manual Override	Analog Device, Analog Input, Digital Device, Digital Input, PID	[DD -Manual Mode, Manual Command], [AD, PID - Manual, Manual Value], [AI, DI - Override, Override Value]
PID Tuning	PID	[PID - Proportional, Integral & Derivative Setpoints, Int Reset Value, Derivative Deadband, In Steady State, Resp Lag Time, SS Dband, Store Int in SS]
Process Settings	Analog Device, Analog Input, Digital Device	[AD -Min Range, Max Range], [AI - Min Range, Max Range, Alarm HH, H, L, LL, Hysteresis, Alarm Time], [DD -Fail Activate Time (Time SP), Fail DeActivate Time (Lift Alarm SP), Delay On, Delay Off, Pulse Cycle Time, Pulse Time SP]
Program Control	Program	[PR - Program Setpoint, Step Time]
Program Settings	Program	[PR - Command, Decision]
Modules Permissions	Modules Permissions refers to Modules - Recipe, Plan, Material, Security Audit, Process Audit, Custom Report – that may be Edited or Operated.	Operate allows the logged-in user to run preconfigured Audits and Reports, and to Start and stop Plans. Edit permission allows the user to create or edit Audits, Reports, Recipes or Plans or Material lists. Edit is an Engineering or Management level permission.

Close

Device Aspects Info

9.2 Groups and Users

Users allows for the configuration of users that may be assigned to any of the created user groups. Users are assigned an access level, a password, and an optional email address. It is not possible to change these settings while the service is active.

The screenshot shows the 'Server Settings' dialog box with the 'Users' tab selected. The 'Groups and Users' option is highlighted in the left-hand navigation pane. The main area contains a table with the following data:

User	Password	Email	Group	Active
Operator1	Change		Operation	<input checked="" type="checkbox"/>
Engineer1	Change		Engineering	<input checked="" type="checkbox"/>
Manager1	Change		Management	<input checked="" type="checkbox"/>
Tim_	Change		Engineering	<input checked="" type="checkbox"/>

Buttons at the bottom of the dialog include 'Add User', 'OK', 'Apply', and 'Close'.

Users in Groups

9.2.1 Adding a User

A User is added in the Users list by Clicking the **'Add'** button. A unique name must be provided for the user. A password must be provided, and an email address may be entered if the user is to receive e-mail reports.

9.2.2 Disabling a User

A user is disabled by selecting the name in the **'Users'** list and unticking the "Active" box.

9.2.3 Managing a User

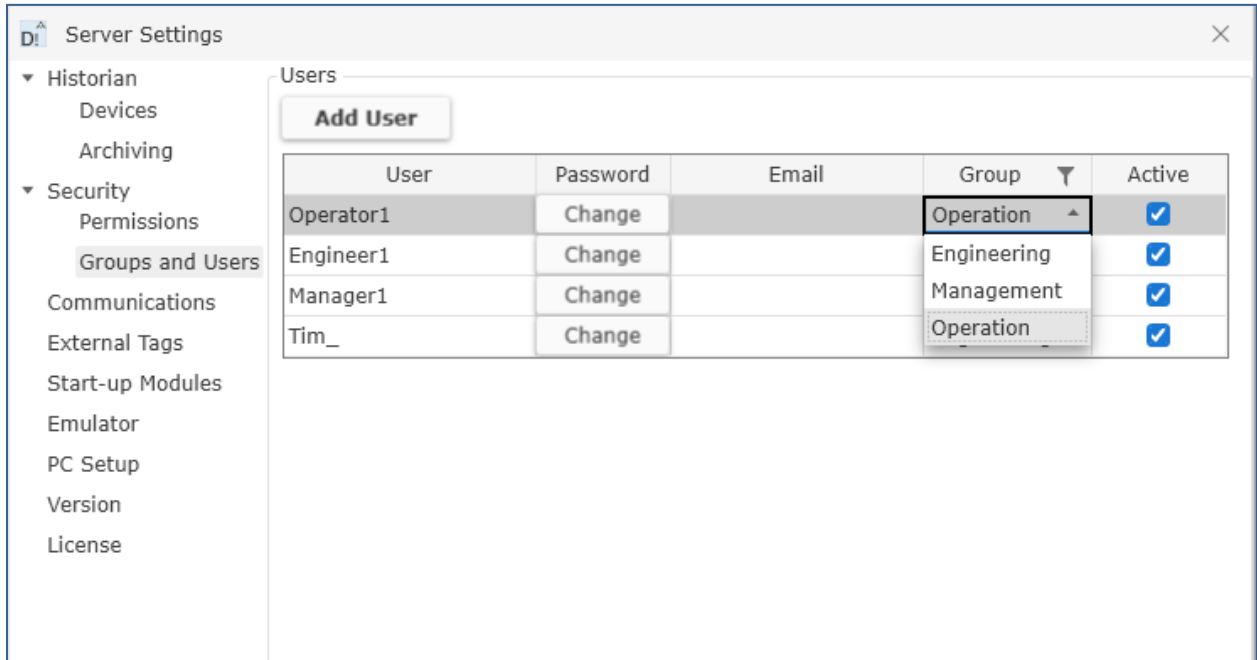
A particular user's password is changed by clicking the **'Change'** hyperlink for the user to display the password panel and then typing in old and new passwords and Confirming.

Once applied, the passwords for the selected server will be updated and the Password Manager will update to reflect this change.

A particular user's email is changed by entering the new email address into **'Email'** field. The address is removed by clearing the 'Email' field.

9.2.4 Assigning a User Group to a User

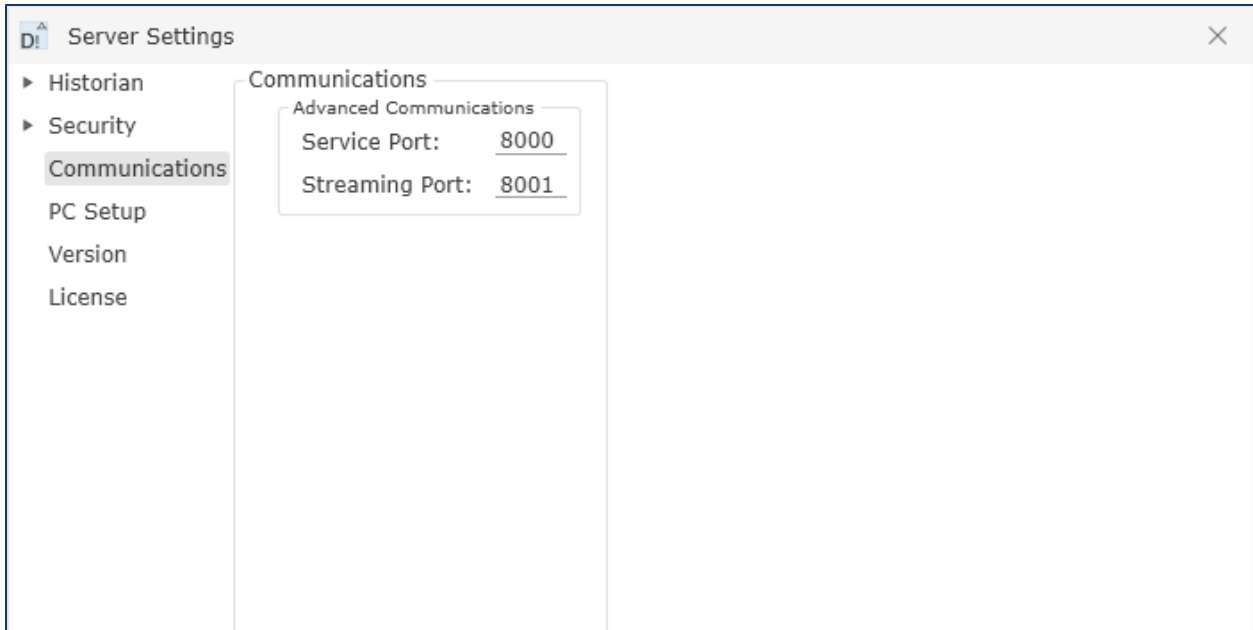
A User is assigned to a group by selecting 'Group' in the 'Groups and Users' section.



Assigning a User to a Group

10 Settings – Communications

This provides access to the port numbers in Ethernet that the Service will use, for Advanced / WCF communications.



Communications Settings for Accord Server

The Advanced Communications module uses TCP in order to communicate with client controls. By default, the Advanced Communications module will provide services using the first available network connection. The following should be checked when setting up for Network comms:

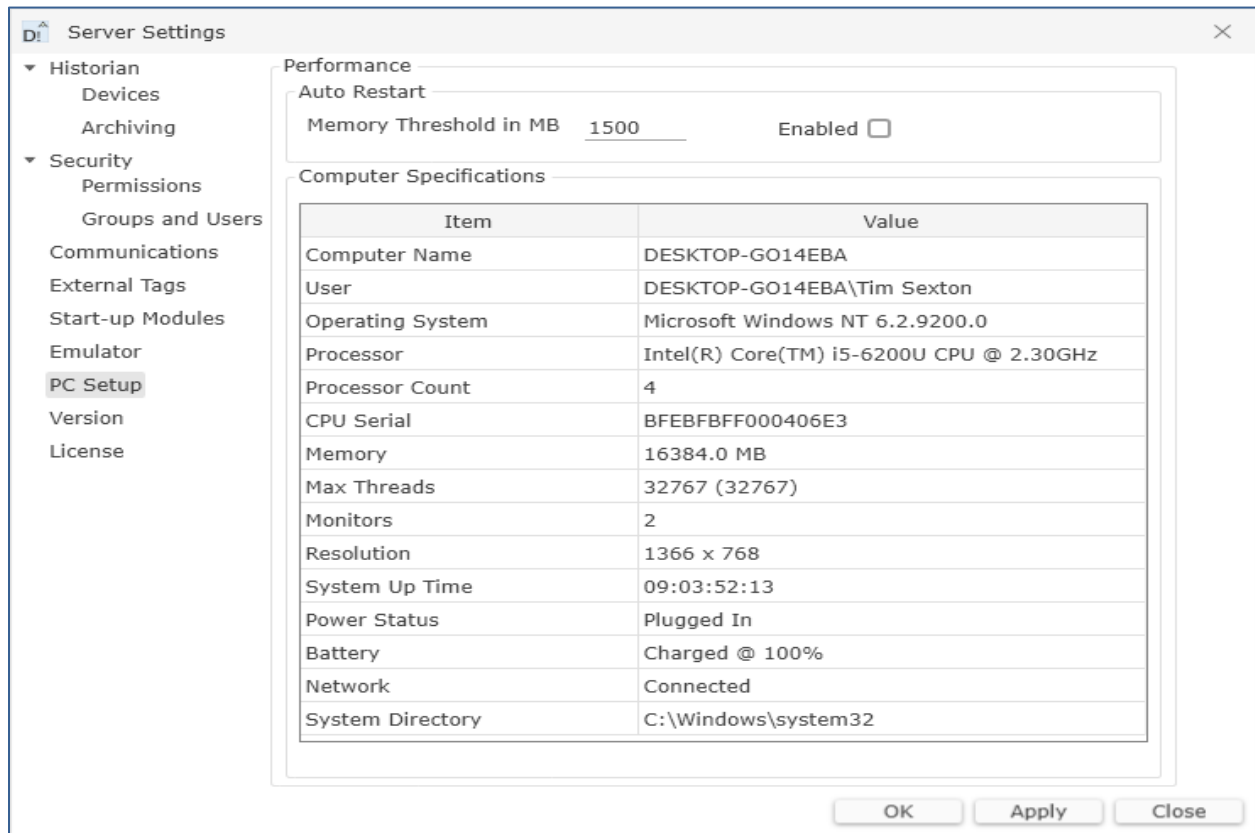
1. IP version 4 is enabled.
2. A static IP address has been configured.

The DNS (if any) is configured correctly.

The port Numbers 8000 and 8001 should be left as is, unless there is a reason why they cannot be used. Changes to these should be matched with changes to HMI config or other modules settings.

11 Server PC Setup

System Information about the PC is provided here.



Server PC Information and Memory Threshold

11.1 Memory Threshold

Accord Server should normally use less than 500MB of memory. The Memory Threshold is a limit for the amount of memory that Accord Server can use. If the Threshold is Enabled and the threshold is exceeded (due to too many processes on PC or communication overload) then the Server module will restart automatically, in order to try to avoid a prolonged poor service.

12 Settings – Version

The Version section provides a summary of all Accord assemblies with their version numbers.

13 Settings – Licence

The License section provides a summary of all features currently licensed to Accord Server. These features start automatically when Server is started.

Start Server Automatically means that Server Starts automatically when PC Starts.

Server Settings

License

License: 0EDFEB-4E5FDE-CF0F20-40A00E-00197A-0C0000

Type: 1000 Equipment Items

Issue Date: Saturday 6 December 2025

Expiry Date: Sunday 6 December 2026

Server Auto Startup

Start Server Automatically

Licensed Modules

Designer License : Development

		Licensed
Designer	Designer	Yes
	Relay	Yes
	Emulator	Yes
	Simulator	Yes
Service	Server	Yes
	Redundancy	
PLC	Library	
	Operation	HMI Client
Manager	Recipe	Yes
	MES/Plan	Yes
	Process Audit	Yes
	Security Audit	Yes
	Custom Reports	Yes

Active Modules

Module	Enabled
WCF Communications	<input checked="" type="checkbox"/>
Data Archiving	<input checked="" type="checkbox"/>
Data Historian	<input checked="" type="checkbox"/>
PLC Register	<input checked="" type="checkbox"/>
Data Reporting	<input checked="" type="checkbox"/>
Redundancy	<input checked="" type="checkbox"/>
Simulator	<input checked="" type="checkbox"/>
Data Integrity	<input type="checkbox"/>

Removable Modules

Module	Enabled
Plan	<input checked="" type="checkbox"/>
Recipe	<input checked="" type="checkbox"/>
HMI Tasks	<input checked="" type="checkbox"/>

OK Apply Close

Accord Server Start-up Modules